

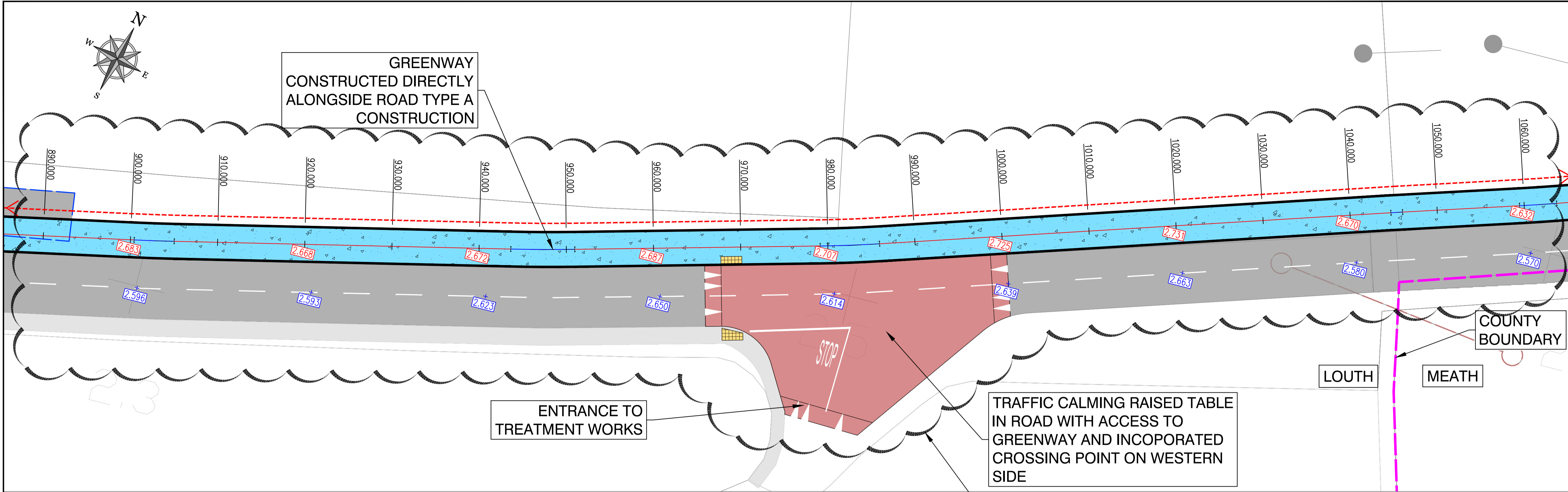
© COPYRIGHT OF THIS DRAWING IS RESERVED BY DBFL CONSULTING ENGINEERS. NO PART SHALL BE REPRODUCED OR TRANSMITTED WITHOUT THEIR WRITTEN PERMISSION.



- NOTES:
- GENERAL NOTES:
1. ALL CO-ORDINATES ARE TO IRISH NATIONAL GRID (BASED ON OS MAPPING)
  2. ALL LEVELS ARE TO ORDNANCE DATUM MALIN HEAD (BASED ON LIDAR SURVEY INFORMATION)
  3. ALL DIMENSIONS IN METRES UNLESS SPECIFIED OTHERWISE

LEGEND:

- TYPE A CONSTRUCTION SECTION BITUMINOUS CONSTRUCTION (ALONGSIDE ROAD)
- TYPE B CONSTRUCTION SECTION BITUMINOUS CONSTRUCTION (AWAY FROM ROAD)
- TYPE C CONSTRUCTION SECTION TIMBERSMALT CONSTRUCTION (DUNES AREA)
- TYPE D CONSTRUCTION SECTION BOARDWALK CONSTRUCTION
- TYPE E CONSTRUCTION SECTION LOCAL BRIDGE
- PROPOSED FOOTPATH
- EXISTING RIVER / WATER COURSE
- EXISTING ROAD
- EXISTING FOOTPATH
- RAISED TABLE
- POSSIBLE LAND ACQUISITION
- EXISTING ROAD LEVEL
- PROPOSED GREENWAY LEVEL



GREENWAY CONSTRUCTED DIRECTLY ALONGSIDE ROAD TYPE A CONSTRUCTION

ENTRANCE TO TREATMENT WORKS

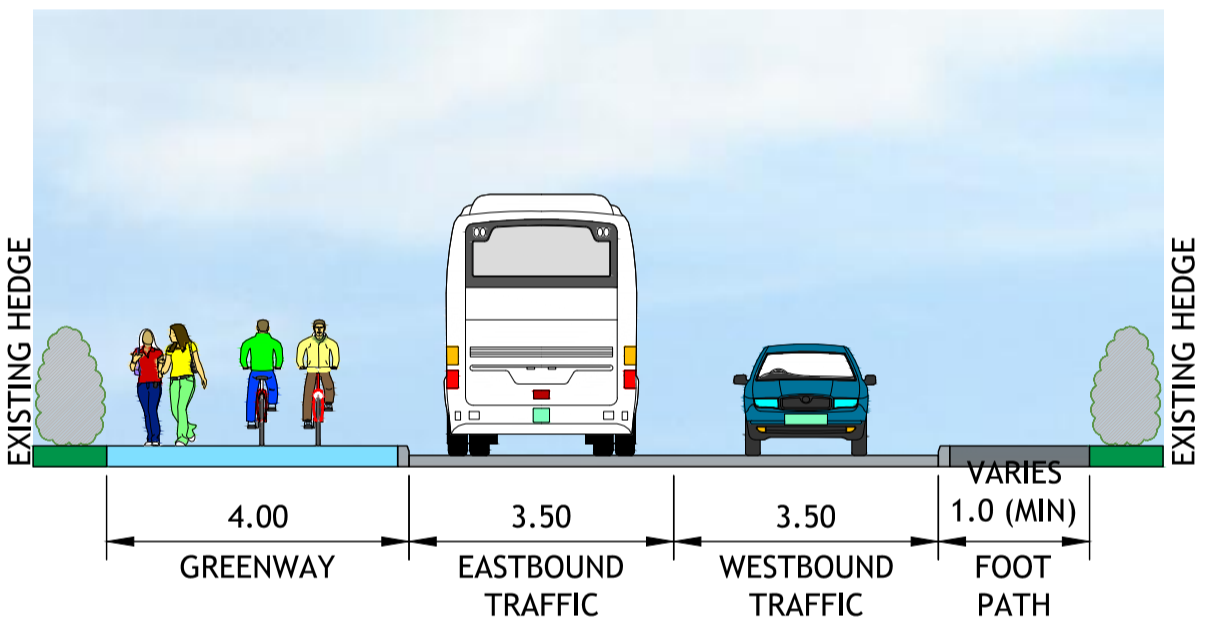
TRAFFIC CALMING RAISED TABLE IN ROAD WITH ACCESS TO GREENWAY AND INCORPORATED CROSSING POINT ON WESTERN SIDE

COUNTY BOUNDARY

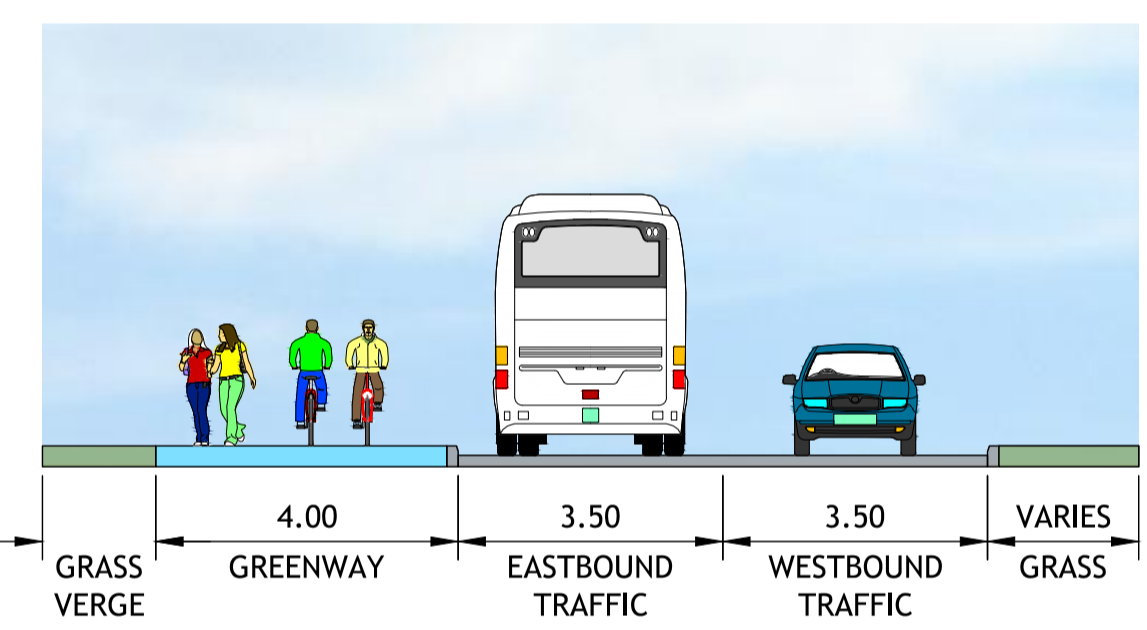
LOUTH

MEATH

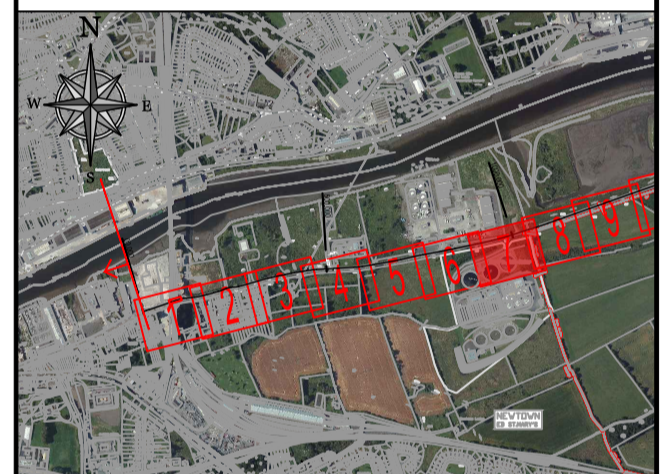
TYPICAL CROSS SECTION TYPE A-1 (CH 900 TO 970)



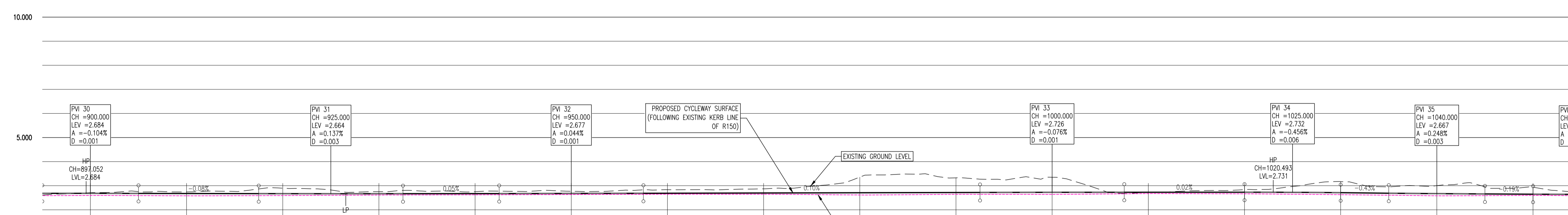
TYPICAL CROSS SECTION TYPE A-2 (CH 1000 TO CH 1810)



DESIGN NOT YET AGREED WITH LOUTH COUNTY COUNCIL  
FINAL LAYOUT SUBJECT TO AGREEMENT WITH LOUTH COUNTY COUNCIL



KEYPLAN



BOYNE GREENWAY LONGSECTION  
SCALE: H 1:250, V 1:100  
DATUM: O.000

CHAINAGE	EXISTING GROUND LEVELS	PROPOSED LEVELS	VERTICAL GEOMETRY	HORIZONTAL GEOMETRY
900.000	2.711	2.683	R = 9575.283 K = 95.753 L = 10.000	R: 200.000 L: 4.600
905.000		2.680	G = -0.083% -1:1204.8	L = 38.610
910.000	2.741	2.676		
917.500		2.670	R = 10914.971 K = 109.150 L = 15.000	
920.000	2.897	2.668		
925.000		2.666	G = 0.054% +1837.4	
930.000	2.753	2.667		
932.500		2.668		
940.000	2.752	2.672	R = 34168.575 K = 341.686 L = 15.000	R: 200.000 L: 7.335
942.500		2.673		
950.000	2.769	2.678		
957.500		2.685		
960.000	2.835	2.687		
970.000	2.870	2.687	G = 0.098% +11017.0	L = 28.152
980.000	3.356	2.707		R: 145.000 L: 6.814
990.000		2.717		
992.500	3.328	2.719		
1000.000		2.725	R = 19777.019 K = 197.770 L = 15.000	
1007.500		2.728		
1010.000	2.735	2.729	G = -0.022% -14448.8	L = 58.752
1020.000	2.836	2.731		
1025.000		2.726	R = 2191.110 K = 21.911 L = 10.000	
1030.000	3.171	2.710	G = -0.434% -1:230.5	
1035.000		2.689		
1040.000	3.003	2.670	R = 4038.016 K = 40.380 L = 10.000	R: 200.000 L: 1.342
1045.000		2.658		
1050.000	2.937	2.648	G = -0.186% -1:536.9	L = 13.43

REV.	DATE	DESCRIPTION	BY	CHKD.
P1	30-08-19	NON-STATUTORY CONSULTATION	DJG	MPK

NON-STATUTORY PUBLIC CONSULTATION

DESIGNED	MPK	PREPARED	DJG
DATE	AUG 2019	CHECKED	RLK

DBFL Consulting Engineers

PROJECT  
**BOYNE GREENWAY**  
DROGHEDA TO MORNINGTON

DRG. TITLE  
**PROPOSED ALIGNMENT SHEET 7**

CLIENT  
comhairle chontae na meath  
meath county council

SCALE	1:250 @A1	FILE REF.	170029-2200
DRG. NO.	170029-2207		P1