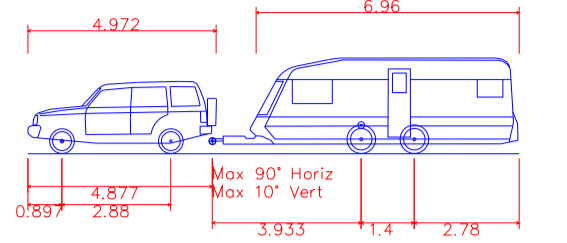
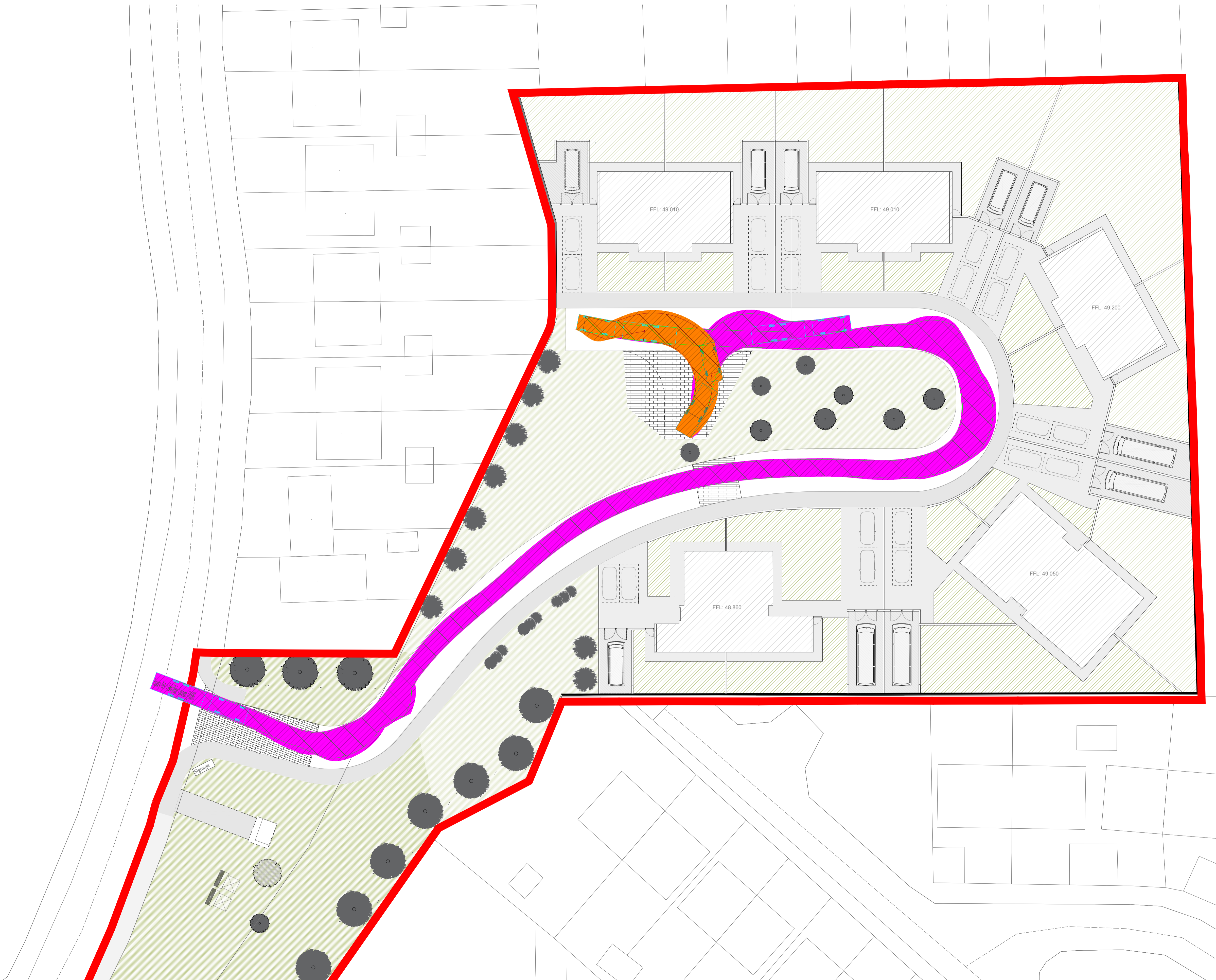


THE INFORMATION ON THIS DRAWING IS TO THE ORDNANCE SURVEY IRELAND ITM COORDINATE SYSTEM



Luxury 4x4 +Twin Axle Caravan (2006)
 Overall Length 12.990m
 Overall Width 2.286m
 Overall Body Height 2.524m
 Min Body Ground Clearance 0.251m
 Max Track Width 2.130m
 Lock-to-lock time 4.005m
 Curb to Curb Turning Radius 5.800m



Rev	Date	Description	By	Chkd.
P01	MAR-21	ISSUED FOR PLANNING	PK	KH

Client:
 comhairle chontae na mí
 meath county council

Project:
 DEVELOPMENT AT
 ST. FRANCIS PARK,
 CO. MEATH

Title:
 AUTOTRACK LAYOUT
 CAR WITH CARAVAN

Scale @ A1: 1:250
 Prepared by: PK Checked: KH Date: MAR-21
 Project Director: Brian Carroll
 Status: PLANNING

TOBIN
 Patrick J. Tobin & Co. Ltd.
 TOBIN Consulting Engineers,
 Block 10-4, Blanchardstown Corporate Park,
 Dublin 15, Ireland.
 tel: +353-(0)1-8030406
 fax: +353-(0)1-8030409
 e-mail: dublin@tobin.ie
 www.tobin.ie

TOBIN Consulting Engineers will not be liable for any use of this document for any purpose other than that for which it was originally prepared and approved. Except where specifically noted, explicitly agreed or advised by TOBIN Consulting Engineers, its copyright notices, and this document shall not be reproduced or transmitted in any form and this document shall not be relied upon by any third party for any decision.

Drawing No.: 7997-2091 P01 Revision: