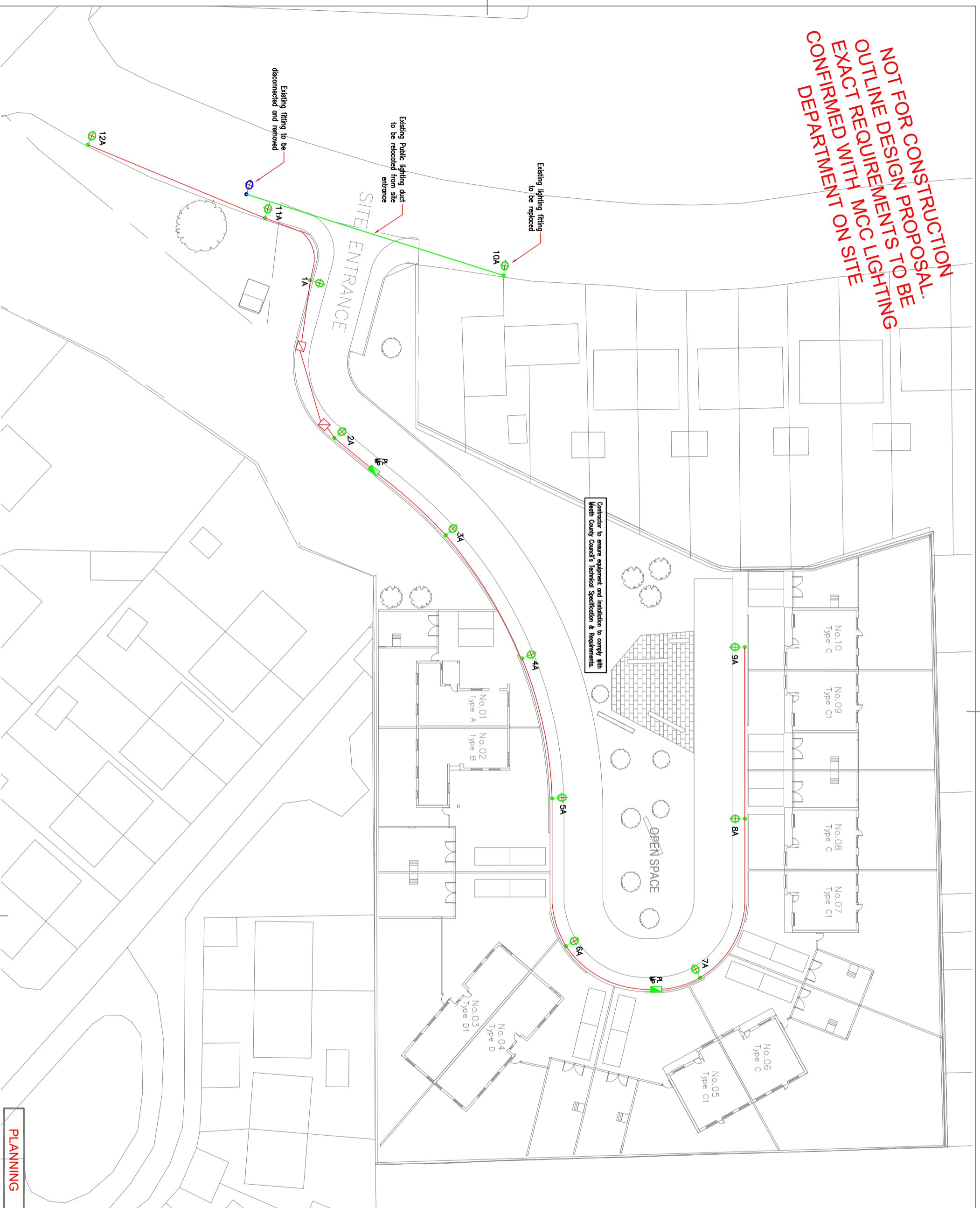


**NOT FOR CONSTRUCTION  
 OUTLINE DESIGN PROPOSAL.  
 EXACT REQUIREMENTS TO BE  
 CONFIRMED WITH MCC LIGHTING  
 DEPARTMENT ON SITE**



**Public Lighting**  
 The public lighting installation shall be carried out in accordance with 'Tun Looghore - Rathdown's Public Lighting Specification'. The Contractor shall include for the following works:  
 • Supply and erection of new public light fittings and columns in accordance with 'Public Lighting Specification'.  
 • Supply and installation of ducting and column sleeves  
 • Excavation and backfill of duct trenches  
 • Construction of draw chambers and supply and fit of cast iron lids  
 • Cabling and all associated electrical works  
 • Framing pockets in planter walls for recessed light fittings

**Notes**  
 • Cables to be SMA, as per Meath County Council Specification  
 • MCBS to be installed in Public Lighting Micro Piler  
 • Columns to be numbered

- LEGEND:**
- A - Thorn R212 XS - 12 x Neutral White, 4000K LED, 350mA - RHT Optic (RX12359M/740), Mounted on 6 inches columns.
  - ESB Networks mini pillar
  - Public lighting micro piler
  - Public lighting ducting route  
No. 100mm red UPVC duct

**Public Lighting**  
 The public lighting installation shall be carried out in accordance with 'Tun Looghore - Rathdown's Public Lighting Specification'. The Contractor shall include for the following works:  
 • Supply and erection of new public light fittings and columns in accordance with 'Public Lighting Specification'.  
 • Supply and installation of ducting and column sleeves  
 • Excavation and backfill of duct trenches  
 • Construction of draw chambers and supply and fit of cast iron lids  
 • Cabling and all associated electrical works  
 • Framing pockets in planter walls for recessed light fittings

**Notes**  
 Lighting stools shall be fixed in the-core cable with separate earth. Cables shall be 3 x 6mm<sup>2</sup> PVC type to VDE specification 0271/5

REV	DATE	ISSUED FOR PLANNING	CL	FS
P	12/03/21	ISSUED FOR PLANNING		

**DO NOT SCALE**  
 This drawing is representative only.  
 To be read in conjunction with Architects drawings.

CONSULTING ENGINEER:

**Bernard Smith**  
 Consulting Engineers

Bernard Smith Consulting Engineers  
 Banelawn Business Park | Coone | Dublin 15  
 E: info@bernardsmith.ie | W: www.bernardsmith.ie | T: 01-801 4127

**PROPOSED HOUSING DEVELOPMENT  
 ST. FRANCIS PARK  
 NAVAN, CO. MEATH**

TITLE:  
**PUBLIC LIGHTING  
 SERVICES LAYOUT  
 SITE PLAN**

SCALE:	DRAWN BY:	JOB NO.:	DWG NO.:	REV.:
1:200 @ A1 (1:400 @ A3)	CL	15-048	CO-02	P
DATE:	CHECKED:			
03/03/2021	FS			

**PLANNING**