

MATERIAL AMENDMENT TO DRAFT
Meath County Development Plan
2021 - 2027

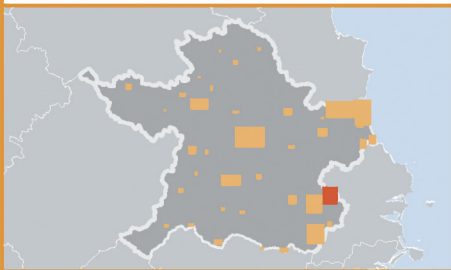
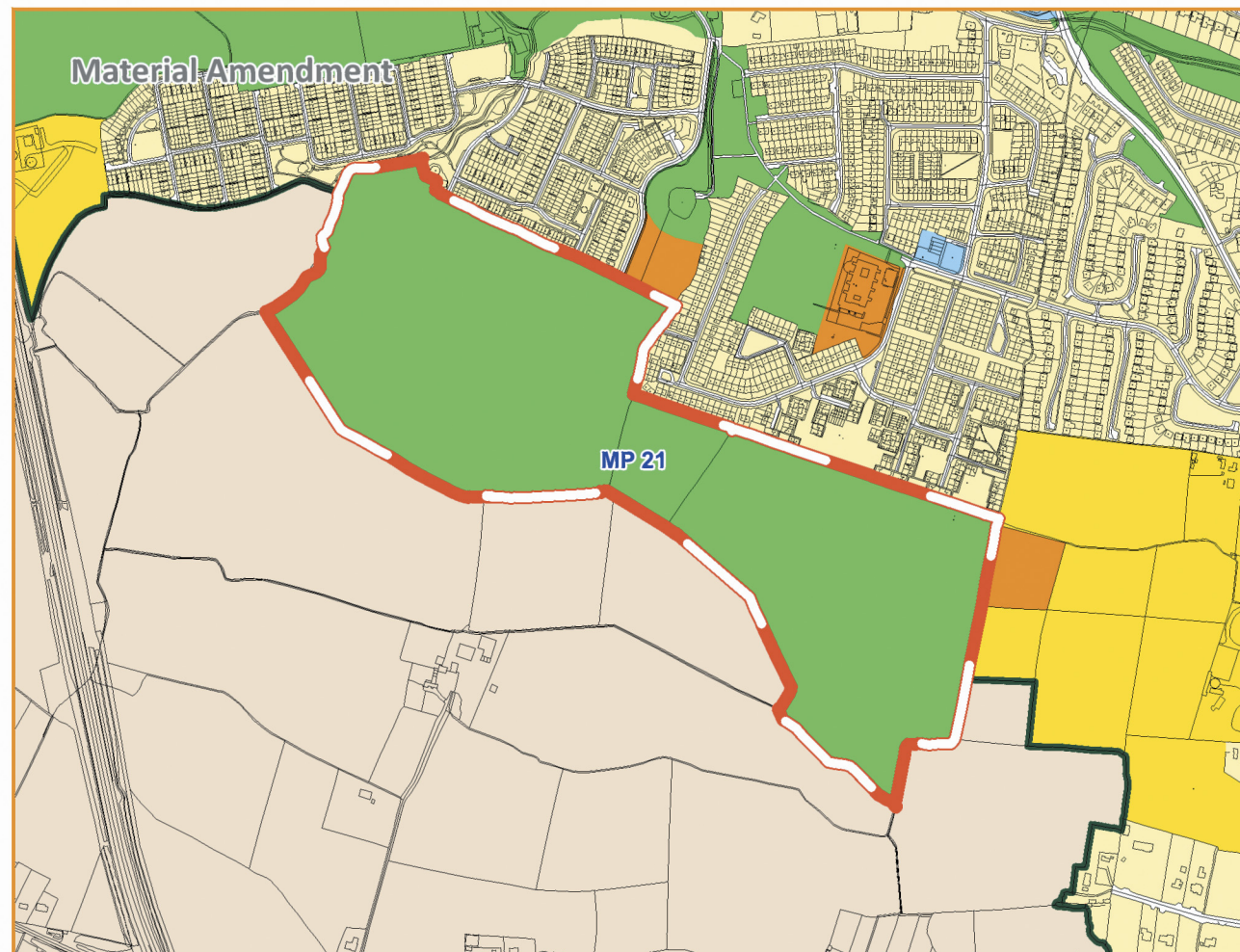
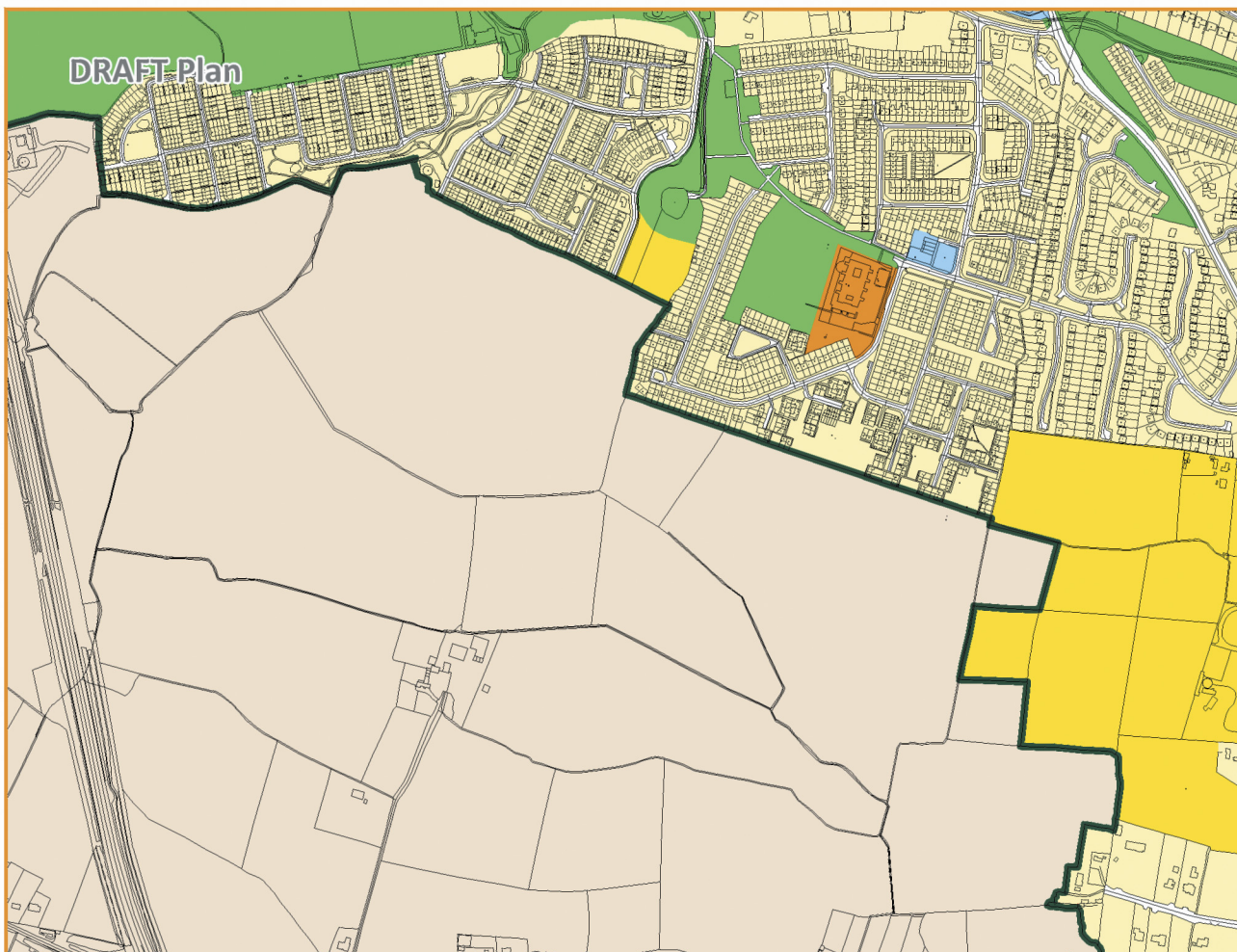
Ashbourne

Material Amendment 07

LEGEND

Zoning Objectives

- A1 - Existing Residential
- A2 - New Residential
- B1 - Commercial/ Town or Village Centre
- B2 - Retail Warehouse Park
- C1 - Mixed Use
- D1 - Tourism
- E2 - General Enterprise and Employment
- F1 - Open Space
- G1 - Community Infrastructure
- TU - Transport and Utilities
- E1 - Strategic Employment Zones (High Technology Uses)
- E1/E3 - Strategic Employment Zones (High Technology Uses)/ Warehousing & Distribution
- RA - Rural Area
- Settlement Boundary
- Fingal County Council - Administrative Area
- Masterplan Boundary
- Strategic Employment Site



comhairle chontae na mí
meath county council

An Roinn um Pleanáil
Planning Department

Further Information:
email: planning@meathcoco.ie
<http://countydevelopmentplanreview.meath.ie/>

Date: May 2021
Scale: N.T.S.
© Ordnance Survey Ireland. All rights reserved.
Licence number 2021/151/NMA/Meath County Council