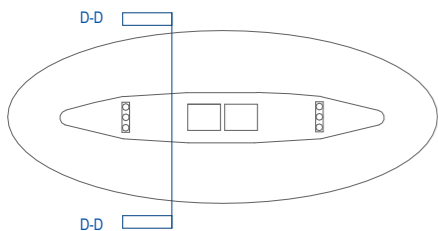


**1 Section D-D**  
Scale - 1 : 100

- ① Salvaged Natural Slate
- ② New Lime Render to Replace Existing Cement Render
- ③ High Performance Glazing to Historic Proportions
- ④ New Roof Lantern



Keynote - not to scale

"COPYRIGHT AND OWNERSHIP OF THIS DRAWING IS VESTED IN OC+C ARCHITECTS LIMITED WHOSE PRIOR WRITTEN CONSENT IS REQUIRED FOR ITS USE, REPRODUCTION OR FOR PUBLICATION TO ANY THIRD PARTY. ALL RIGHTS RESERVED BY THE LAW OF COPYRIGHT AND BY INTERNATIONAL COPYRIGHT CONVENTIONS ARE RESERVED TO OC+C AND MAY BE PROTECTED BY COURT PROCEEDINGS FOR DAMAGES AND/OR INJUNCTIONS AND COSTS."

DO NOT SCALE THIS DRAWING  
ALL WRITTEN DIMENSIONS ARE IN MILLIMETRES  
ANY INCONSISTENCIES TO BE REPORTED TO THE ARCHITECT IMMEDIATELY

© OC+C ARCHITECTS 2020

		16 Merrion Row, D02 CF90 Dublin	
		t: +353 01 516 4342 www.ocandcarchitects.ie info@ocandcarchitects.ie	
Rev.	Date	Description	by
DRAWN <b>Author</b>	PROJECT <b>Meath County Archive</b>	SCALE <b>As Indicated @ A3</b>	STATUS <b>Planning</b> (NOT FOR CONSTRUCTION)
CHECKED <b>Checker</b>	CLIENT <b>Meath CoCo</b>		
DRAWING TITLE <b>Section D-D, (Proposed)</b>			REVISION
DRAWING NUMBER <b>21C02-P-0011</b>			