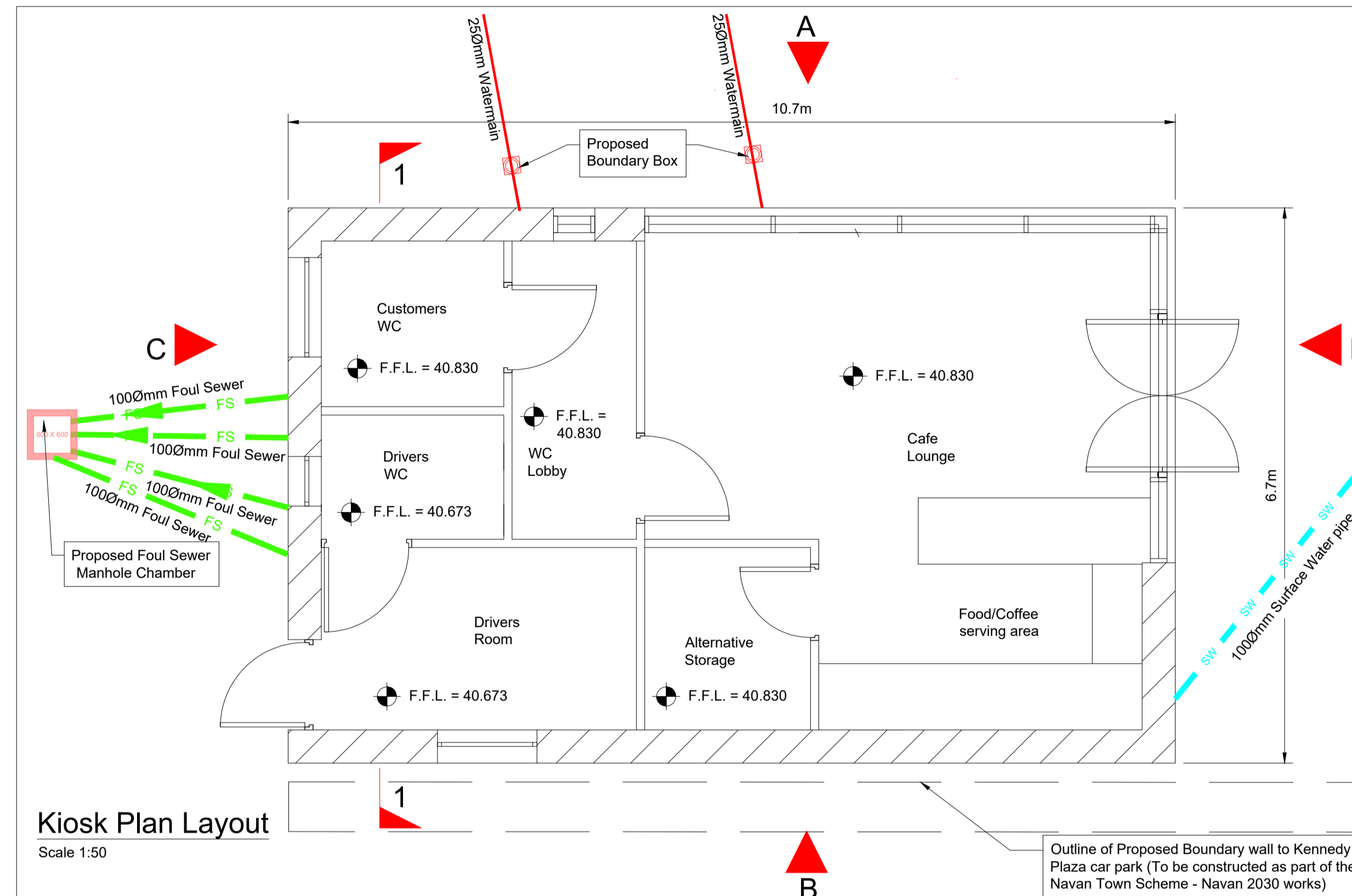
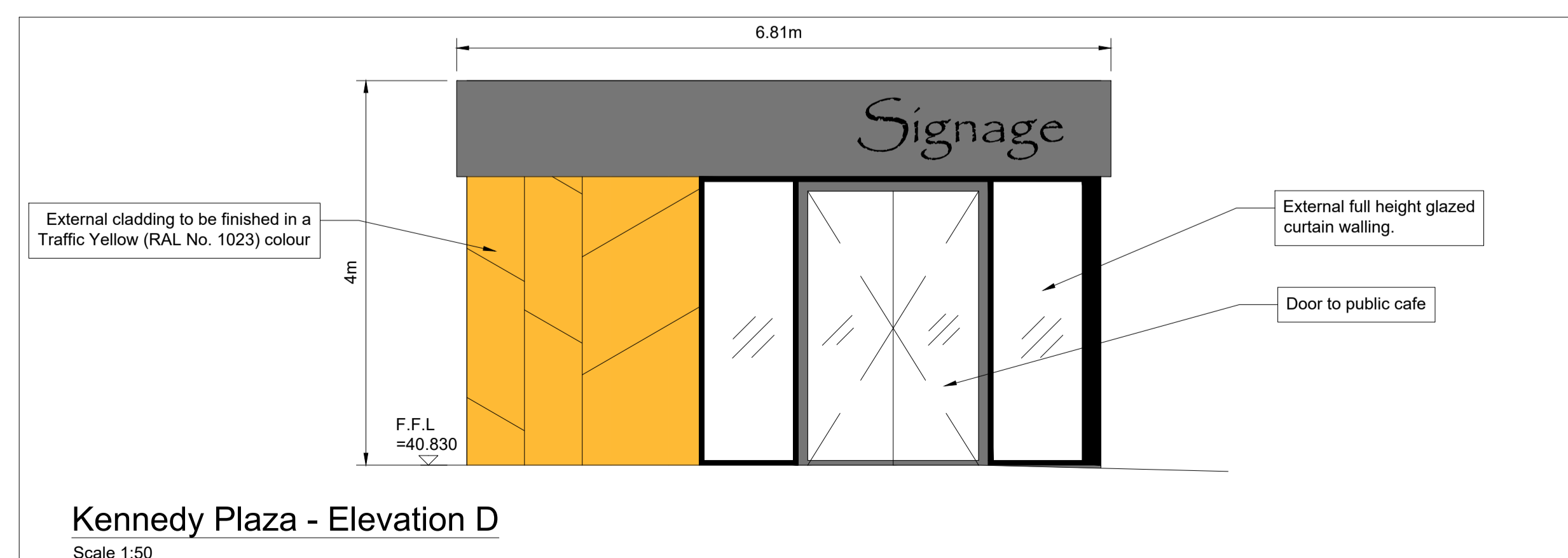
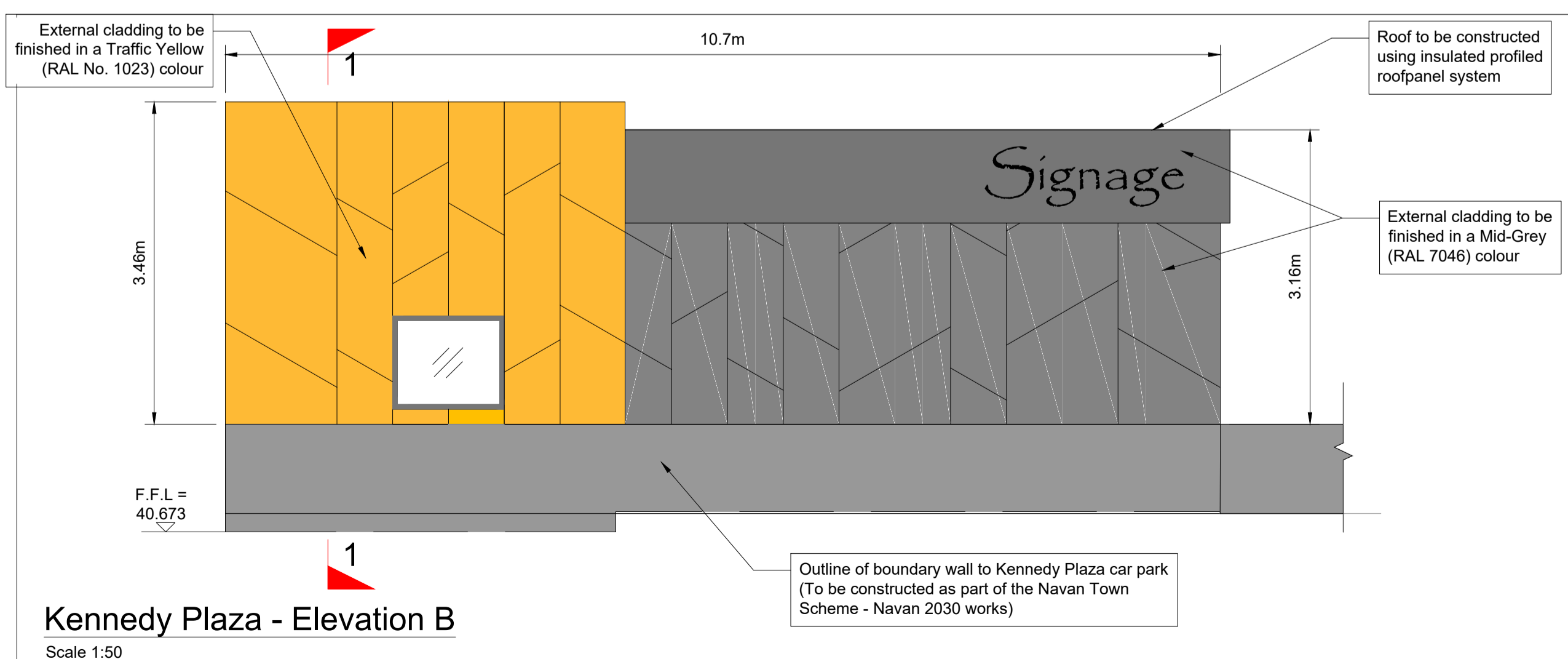
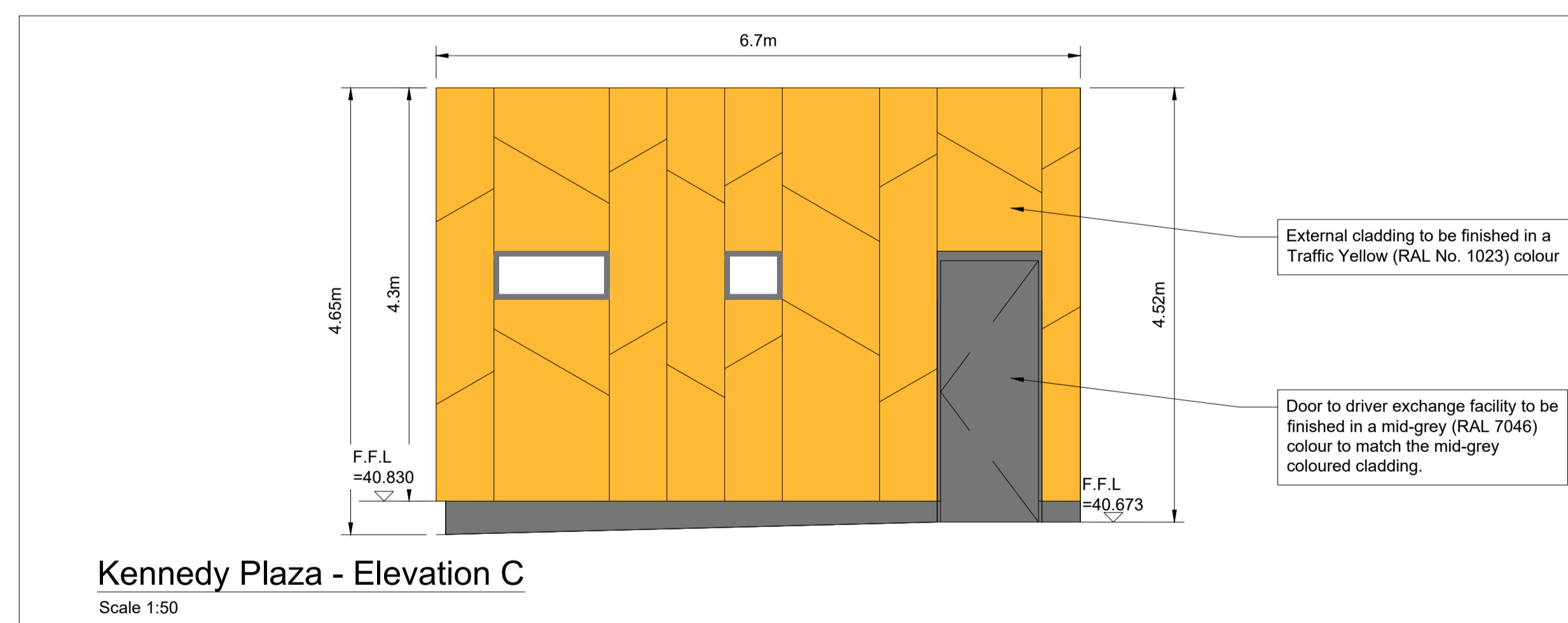
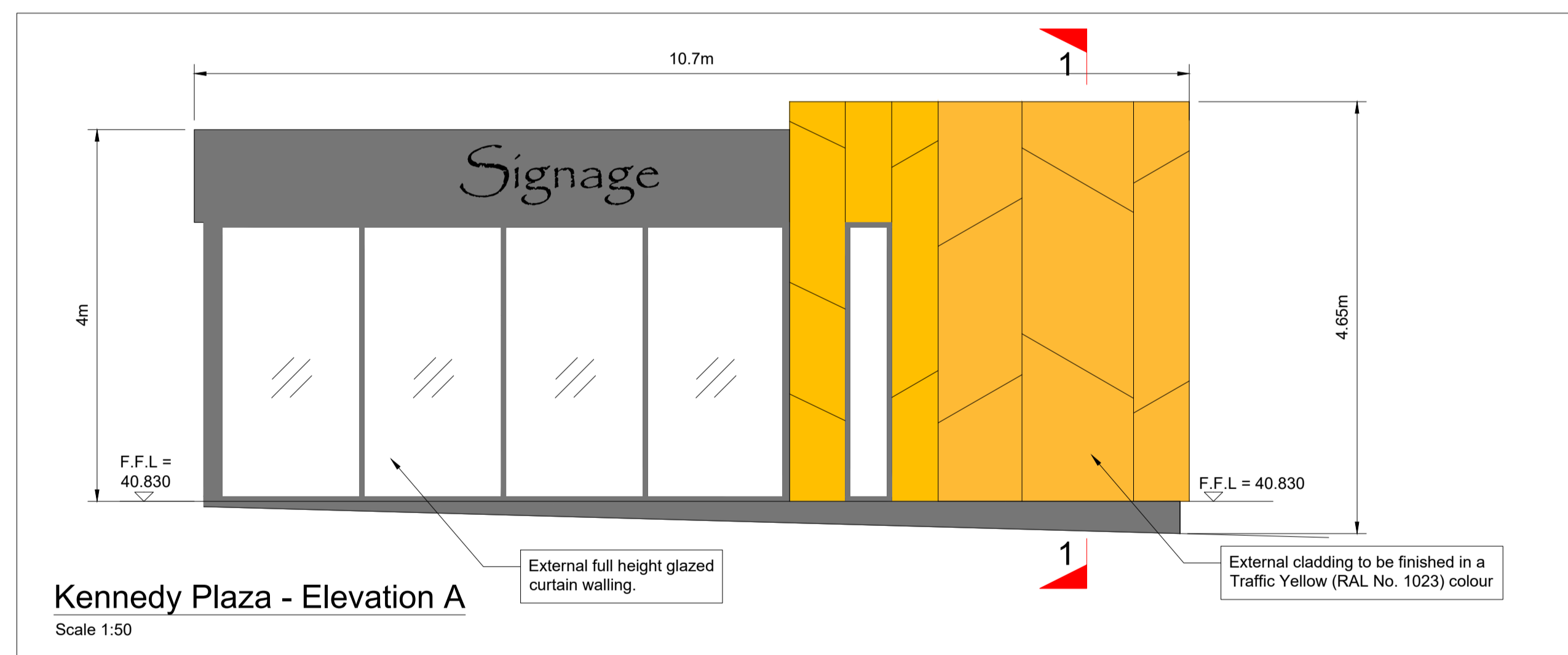


PART VIII - PUBLIC DISPLAY PROPOSED AMENDMENTS TO PREVIOUSLY PERMITTED KIOSK AT KENNEDY PLAZA



- Legend:**
- F.F.L. = Internal Finished Floor Level for the Kiosk Building.
- Notes:**
- All Dimensions are in metres
 - For Kiosk location see Drawing NAV_30-CSE-K1-XX-DR-C-2001
 - All services to be delivered via underground ducting and pipework, which are currently being constructed under Contract No. 3 of the Navan Town Scheme - Navan 2030.
 - For Section 1-1 see Drawing NAV_30-CSE-K1-XX-DR-C-2002



Rev	Description	Drawn	Checked	Date
P01	Part VIII	TOB	MC	29.11.22

Clifton Scannell Emerson Associates Limited
Consulting Engineers,
3rd Floor The Highline,
Bakers Point, Pottery Road,
Dun Laoghaire, Co. Dublin,
Ireland, A96 KW29
T: +353 1 288 5006
F: +353 1 283 3466
E: info@csea.ie
W: www.csea.ie

Brady Shipman Martin
Canal House,
Canal Road,
Dublin 6
T: +353 1 2081900

BSM Brady Shipman Martin
Est. 1968
Built. Environment.

Client: Comhairle Chontae na Mí Meath County Council

Project: Navan Town Scheme - Navan 2030
Proposed Kiosk
Proposed Details

Dwg. Title: NAV_30 - CSE - K1 - XX - DR - C - 2201

Drawn By: TOB Checked By: MC Date: Nov 2022

Project Code	Originator	Zonal Phase	Level	Type	Role	Dwg. No.
S2	Suitable for Planning	AS SHOWN				

Status Code: P01 Suitability Description: Part VIII Scale @ A1

Revision: 18_090 Project Status: CSEA Job No.