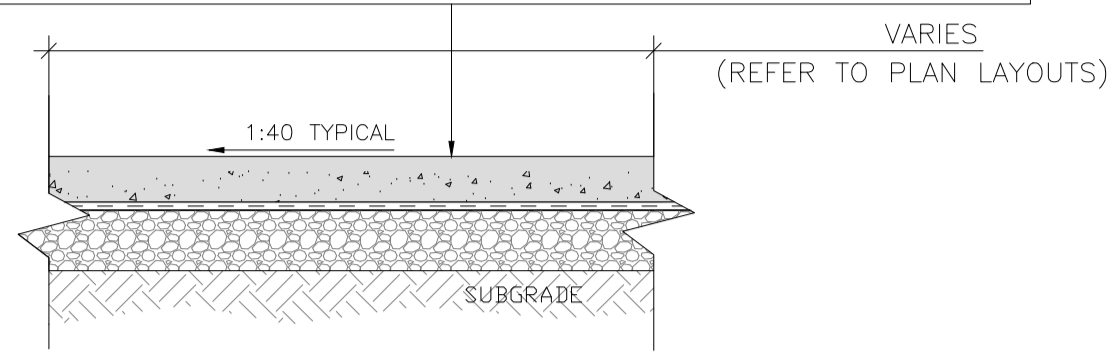


\*100mm THICK IN-SITU CONCRETE FOOTPATH (SEE NOTE 5) ON POLYTHENE SHEETING SEPERATING MEMBRANE 125 MICRONS THICK (300 LAPS) ON 200mm CL804 WELL COMPACTED SUBBASE.

PROVIDE TRANSVERSE CONTRACTION JOINTS IN FOOTPATH @ 3m Cts. USING A DOUBLE LAYER OF ROOFING FELT TO IS EN 13707 FOR THE FULL DEPTH OF THE JOINT.

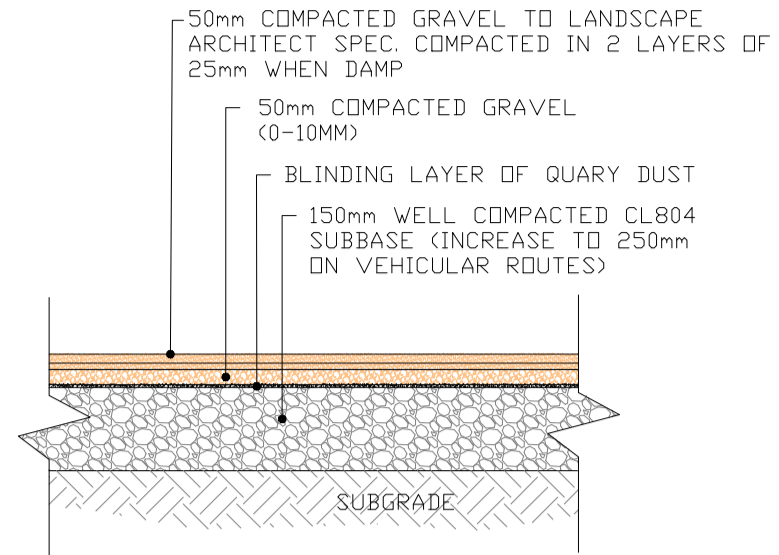
\*AT VEHICULAR CROSSINGS INCREASE DEPTH OF CONCRETE TO 200mm & PROVIDE 1no. LAYER OF A146 MESH FOR EXTENT OF VEHICULAR CROSSING.



**A TYPICAL CROSS SECTION THRO' CONCRETE FOOTPATH**

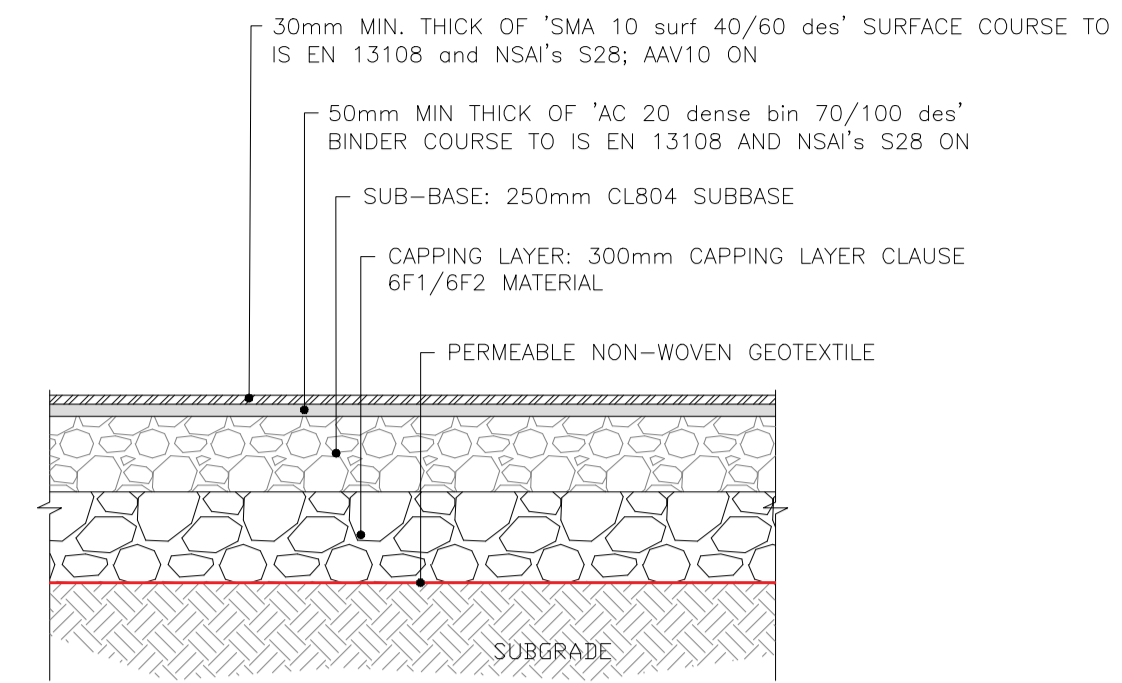
SCALE @ A1: 1:25

NOTE: ALL ONCRETE FOOTPATHS TO BE FINISHED WITH BRUSH FINISH U.N.O. AND ALL EDGES TO BE BULLNOSE TROWELLED SMOOTH FINISH 100mm WIDE MIN.



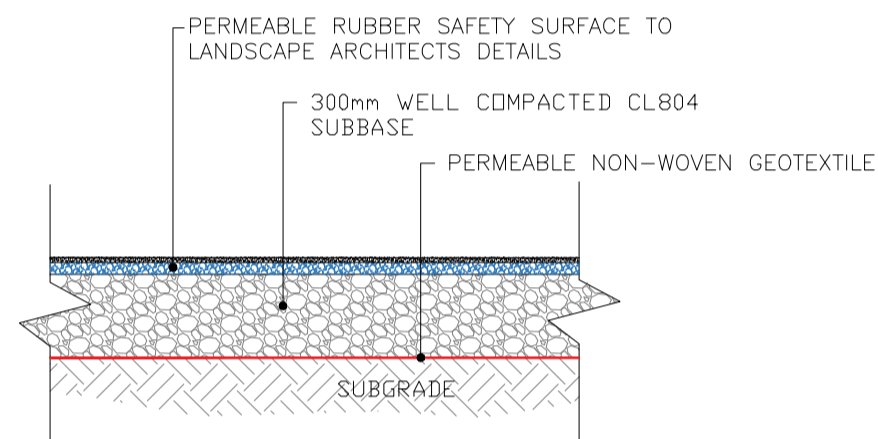
**B TYPICAL BUILDUP FOR COMPACTED GRAVEL PATHS**

SCALE @ A1: 1:25



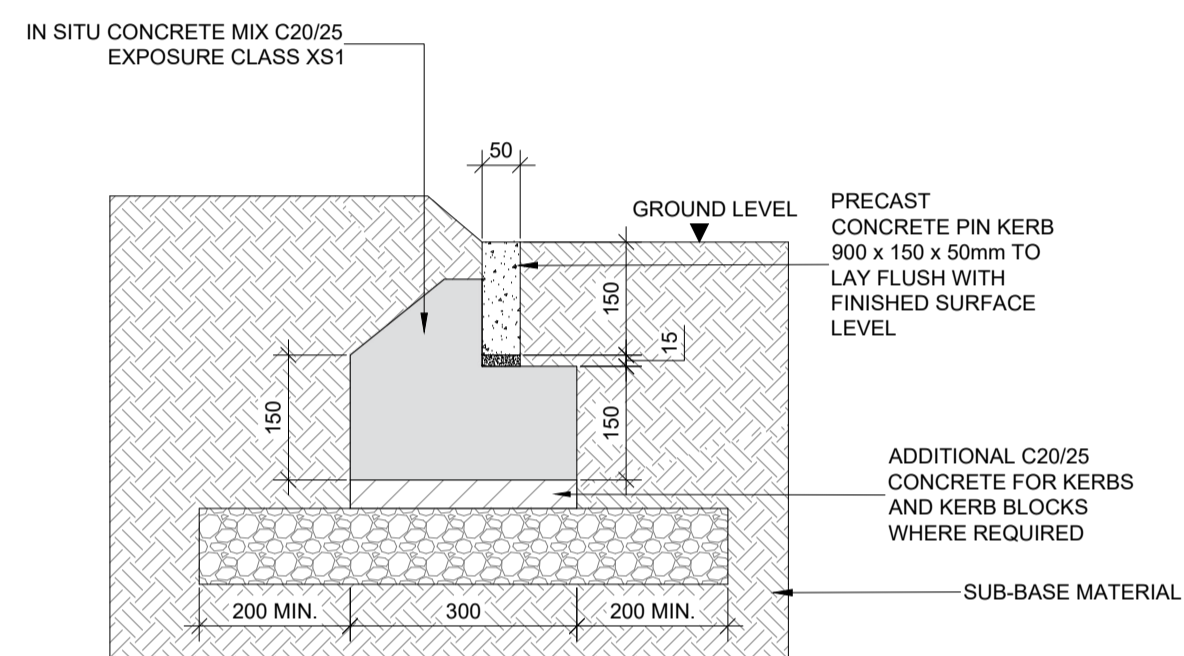
**C ASPHALT SURFACING BALLCOURTS/PLAYING SURFACES**

SCALE @ A1: 1:25



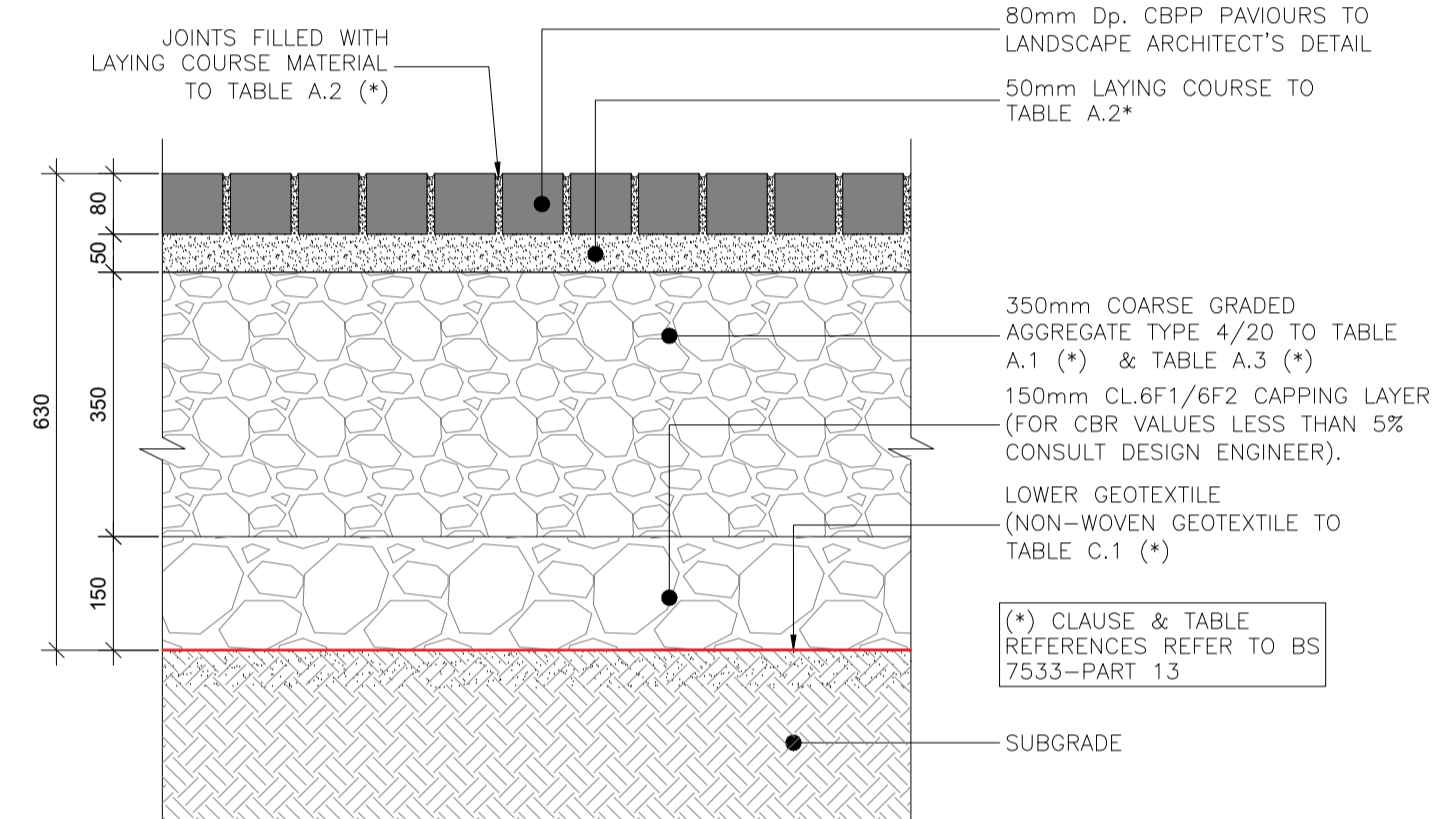
**D TYPICAL POROUS SAFETY SURFACING BUILDUP**

SCALE @ A1: 1:25



**E PRECAST CONCRETE KERB EDGING - TYPICAL DETAIL**

SCALE @ A1: 1:10



**F TYPICAL PERMEABLE PAVING DETAIL**

SCALE @ A1: 1:10

**NOTES**

- THIS DRAWING IS TO BE READ IN CONJUNCTION WITH ALL ENGINEERS & ARCHITECTS DRAWINGS FIGURED DIMENSIONS ONLY (NOT SCALING) TO BE USED. WHERE A CONFLICT OF INFORMATION EXISTS OR IF IN ANY DOUBT - 'ASK'.
- CONSULTANTS TO BE INFORMED IMMEDIATELY OF ANY DISCREPANCIES BEFORE WORK PROCEEDS.

PL1	05.07.23	DRAFT ISSUE FOR COMMENT	POD
ISSUE	DATE	DESCRIPTION	BY

Project Engineer: POD | Project Director: SOC

**PART 8 PLANNING**

**BM** Dublin Office: Sandwith House, 52-54 Lower Sandwith Street, Dublin 2, Ireland. Tel: (01) 677 3200 Fax: (01) 677 3154  
London Office: 12 Mill Street, London SE1 2AY, United Kingdom. Tel: (0044) 20 3750 3530  
 Consulting Engineers, Civil, Structural, Project Management. E-mail: bmce@bmce.ie Web: www.bmce.ie

**comhairle chontae na mí**  
meath county council

CLIENT  
**MEATH COUNTY COUNCIL**

PROJECT TITLE <b>FAIR GREEN, OLDCASTLE, CO. MEATH</b>	BM PROJECT No. <b>23197</b>
REFERENCE	SUITABILITY REVISION

DRAWING TITLE  
**TYPICAL CONSTRUCTION DETAILS**

DWG	DRAWING REFERENCE <b>23197-BMD-00-ZZ-DR-C-1200</b>	STATUS <b>S0</b>	REVISION <b>PL1</b>
-----	---	---------------------	------------------------