

Welcome



Rialtas na hÉireann
Government of Ireland

ENFIELD TOWN TEAM

comhairle chontae na mí
meath county council

the paul hogarth company

[1]

Welcome to the second public consultation for the **Enfield Town Centre First Plan**. The following boards explain the findings and proposals of the **draft plan**.

It is important that as many local people as possible contribute to shaping this plan and **the future of Enfield**. So please make sure to spread the word and **have your say!**

This draft plan has been developed by the local community via the newly formed **Enfield Town Team**. It has been organised by **Meath County Council** as part of the national **Town Centre First** programme and facilitated by consultants from The Paul Hogarth Company.

The process so far has involved a **public survey** in 2022 and a series of Town Team **workshops**. Once finalised in Autumn 2023, this plan will be used to **attract funding and investment** to Enfield and help fulfil the objectives of the statutory **Meath County Development Plan**.

Complete the survey online via the QR code or by visiting www.meath.ie/council/council-services/planning-and-building/town-centre-first-plan-for-enfield



Historically a transport outpost that has grown into a town

Excellent regional linkages, via the motorway, railway and canal

Popular expanding town with strong businesses, schools and clubs

Compact town that should be easy to walk and cycle around

Heavy traffic along main street impacting upon quality of life

Limited community spaces (indoor and outdoor)



“The Town Centre First policy aims to create town centres that function as viable, vibrant and attractive locations for people to live, work and visit, while also functioning as the service, social, cultural and recreational hub for the local community”



Public Survey Results 2022



Rialtas na hÉireann
Government of Ireland

ENFIELD TOWN TEAM
comhairle chontae na mí
meath county council
the paul hogarth company

[2]

To succeed, the design for the Enfield Town Centre Plan must **reflect the views, needs and aspirations** of local people as much as possible. At the outset of this process a first consultation was held to gain insight into what residents want to see in the area. The following **summarises that consultation**.

It was clear from the findings that Enfield is a place with a strong sense of **community**. It is a place that is developing quickly, and needs to provide **civic spaces for people** to socialise and to organise communal events.

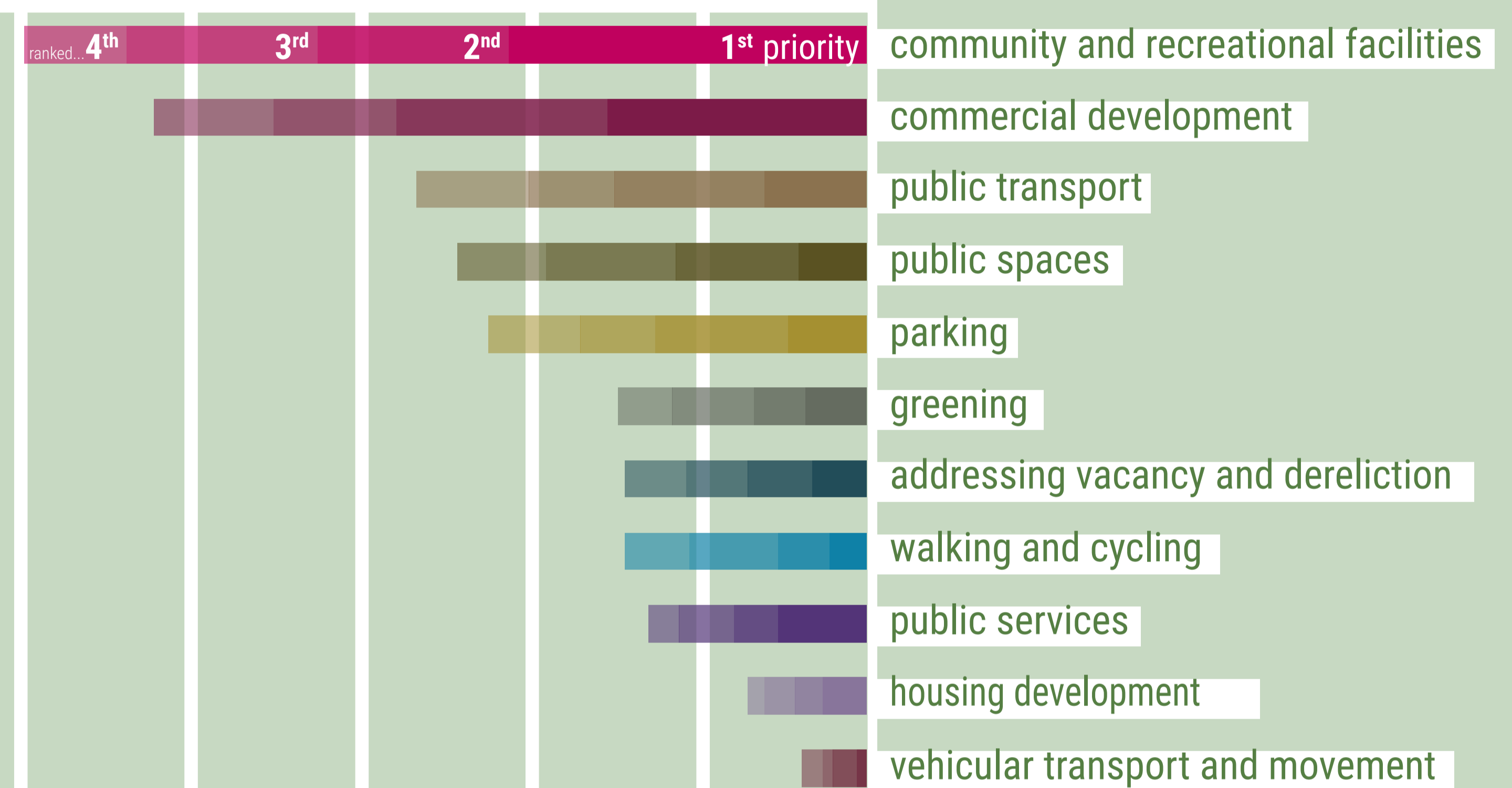
It is also a very **walkable town** that could be wonderful to visit and move around on foot or by bike.

Based on the findings, for this second consultation, a **vision** has been developed alongside a **draft plan** for the future of Enfield.



What are your top priorities?

Please rank 1-4



What three things do you *like* most about Enfield Town Centre?

- Cleanliness thanks to the tidy towns, planters with flowers along the street and the canal amenities
- Good shops, good pubs, friendly people
- Village is small with a visible start and end point
- The community spirit, the schools, the canal walkway
- Canal walkway, effort made by tidy towns and to see empty buildings coming back to life
- The people. The greenway. The potential.
- The variety of shops, the playground for the children and the transport system (train and bus)
- Atmosphere, locals you meet, feels welcoming
- It's walking distance from my house. There's a couple of nice shops. Enfield tidy towns keep it looking nice with flower planting.
- Relatively clean, the town is centred on the Main Street, wide street
- The ring road
- It has independent Shops.. A secondary school on the way and its close to the motorway
- Boat park, flower arrangements, playground

What three things do you *dislike* most about Enfield Town Centre?

- Ugly street parking, closed shops, poor playground
- Too narrow sidewalks, not enough outdoor seating areas
- Lack of parking. Some run down looking shop fronts
- Lack of restaurants, lack of space for more local businesses or start-ups, No remote working hub.
- No big supermarket. No public transport to the smaller villages around Enfield. No parking.
- Traffic, no markets at the weekend, no car free days
- Too many houses being built
- Lack of reasonable public transport options. Train so expensive ... Lack of a designated community space. The frequent issues with the water.
- Unused/derelict buildings and lack of community spaces e.g. sports hall, library, a park/green space to walk especially for elderly people, basketball
- Nowhere for teenagers to go, no community hall, can't cycle safely

Town Centre Vision + Aims



Rialtas na hÉireann
Government of Ireland

ENFIELD TOWN TEAM
comhairle chontae na mí
meath county council
the paul hogarth company

[3]

A key question for the Town Centre First process is **What kind of place do we want Enfield to be?** The Draft Vision Statement and Aims set out priorities for the future of Enfield. Once finalised through this consultation, every project in the town should be evaluated against their ability to fulfil these important criteria.

“ Enfield will be the most attractive, vibrant, and green town, with welcoming spaces for everyone and making the most of excellent local and regional connectivity ”

Draft Vision for Enfield

Attractive

Buildings and spaces of the highest quality design and upkeep

Vibrant

An active and supported community and flourishing economy

Community

A friendly and safe place with accessible spaces for everyone

Sustainable

A cleaner and far greener environment for people and nature

Connected

A compact town for walking and cycling, while making the most of strong regional links

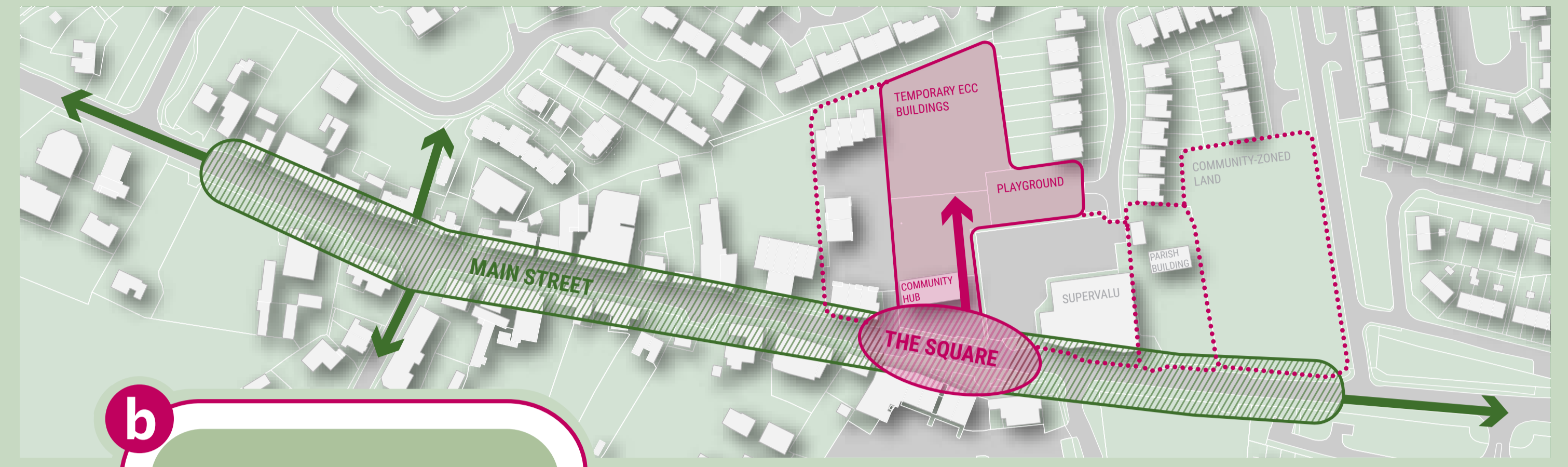




Main Street

The following boards illustrate **15 draft Town Centre Projects** for Enfield organised by **four thematic groupings**. These vary in scale and character, but all **seek to fulfill the vision and aims** for the town. We look forward to hearing your feedback and ideas on each.

The first two projects focus on **Main Street** - a vital thoroughfare for traffic, but more importantly, **for people, cyclists, local businesses and the community**.



a Main Street

Designing a Main Street that focuses on people; high quality, commercially vibrant, and safe for walking and cycling.



Main Street is the **lifeblood** of Enfield and it must therefore work as well as possible for everyone in the town. At present it is dominated by vehicles and unattractive in places. This project would involve a **comprehensive redesign of Main Street** to increase space for **pedestrians and cyclists** while managing vehicular **speeds and car parking**.

It should include natural stone **paving, street trees** and better **lighting**. Overhead cables should also be buried beneath the ground. Delivered in phases, this project would also include a programme of **frontage improvements**, helping make shops and other Main Street buildings more attractive.



b The Square

Creating welcoming civic spaces for events and everyday activities by looking at the role of the community hub area as a whole.



Enfield lacks a central civic space where the community can come together and events can take place, such as markets or small performances.



With the moving of Enfield Community College to its new home, the opportunity exists for the local authority to develop this site. As per the current County Development Plan (which was in place before the Town Centre First process), the Local Authority are preparing a proposal which includes **improved access to the adjoining play area, the creation of a new public space** to the Main Street and a public car park.



Submissions from both the Town Centre First process and any future Part 8 application will be considered as part of any future development on this site.





Main Street

The next two projects seek to **sustain the town centre**, complement proposals for Main Street and **address road safety** issues concerning traffic.

c

The Bypass

Revisiting the bypass' design to reduce traffic congestion in the town centre.



To **relieve Main Street of through-traffic** it will be important for the town by pass to **work more effectively** than at present. This should consist of signage, environmental improvements and consideration of a round-about at Johnstown Road.



d

Dublin Road

Improving the public realm with a focus on walking and cycling connections between the Town Centre and new developments.



As new housing and the Community College are being developed in the east of the town, it is essential that Dublin Road is as **safe and attractive** as possible **for walking and cycling**. This should include improved pavements and crossings, segregated cycle lanes and better lighting.





Green and Blue

The projects on this board relate to Enfield's **Green and Blue** future. They focus on **green infrastructure, amenity and recreational space**, and **sustainable initiatives**.

e

Green Enfield

Making Enfield greener through increased planting of trees, better ecological habitats and Sustainable Urban Drainage.



f

The Canal

Encouraging use of this blue asset with improved recreation opportunities, wayfinding, lighting, animation and a new pedestrian bridge and cycle bridge.



g

The Park

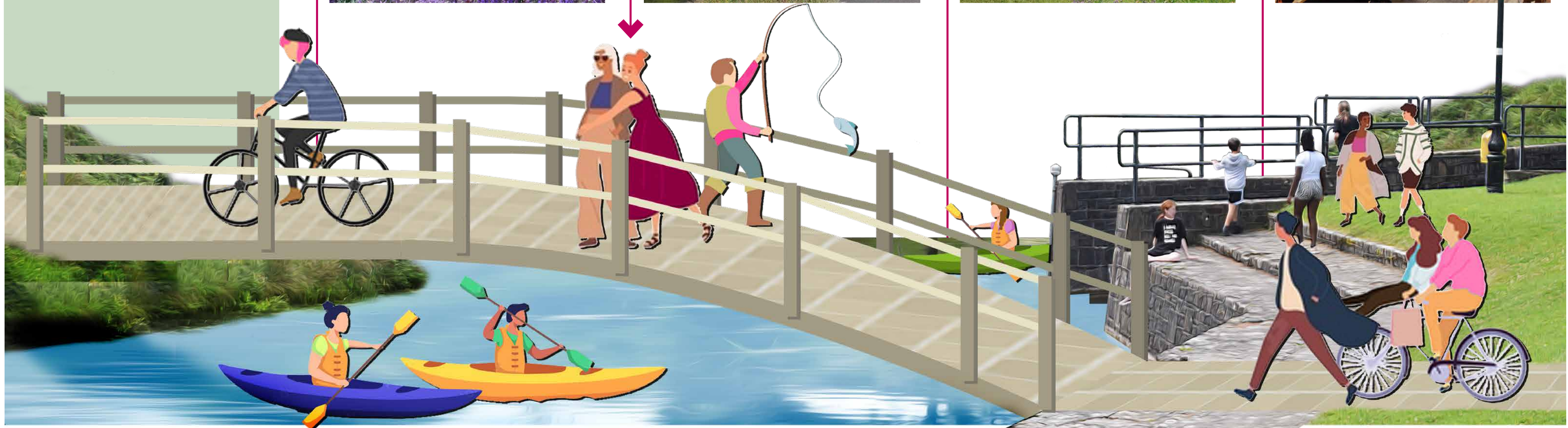
Linking the Town Centre and Canal with a new Town Park at the Rath site. This should include areas for active and passive recreation for all ages and interpretation of the site's heritage and wildlife.



h

Smart Enfield

Futureproofing the town through its digital and green energy infrastructure, including increase Wi-Fi and community energy initiatives.



Linkages



The four draft projects on this board aim to make the **most of Enfield's good connectivity**, ensuring that everyone (be they residents, commuters or tourists) are encouraged to **move through the town on foot and bicycle** as much as possible. They also aim to make the most of key assets - the train station and the town's schools (and preschools).

i

Bus and Train Network

Improving access to public transport, through additional bus stop locations, public transport frequency, rationalisation of town car parking, and where possible, costs.



j

The Station

Creating a more welcoming, safe, and user-friendly Transport Hub at the station through environmental improvements (inc. lighting) while making better use of the available space.



k

The Town's Schools

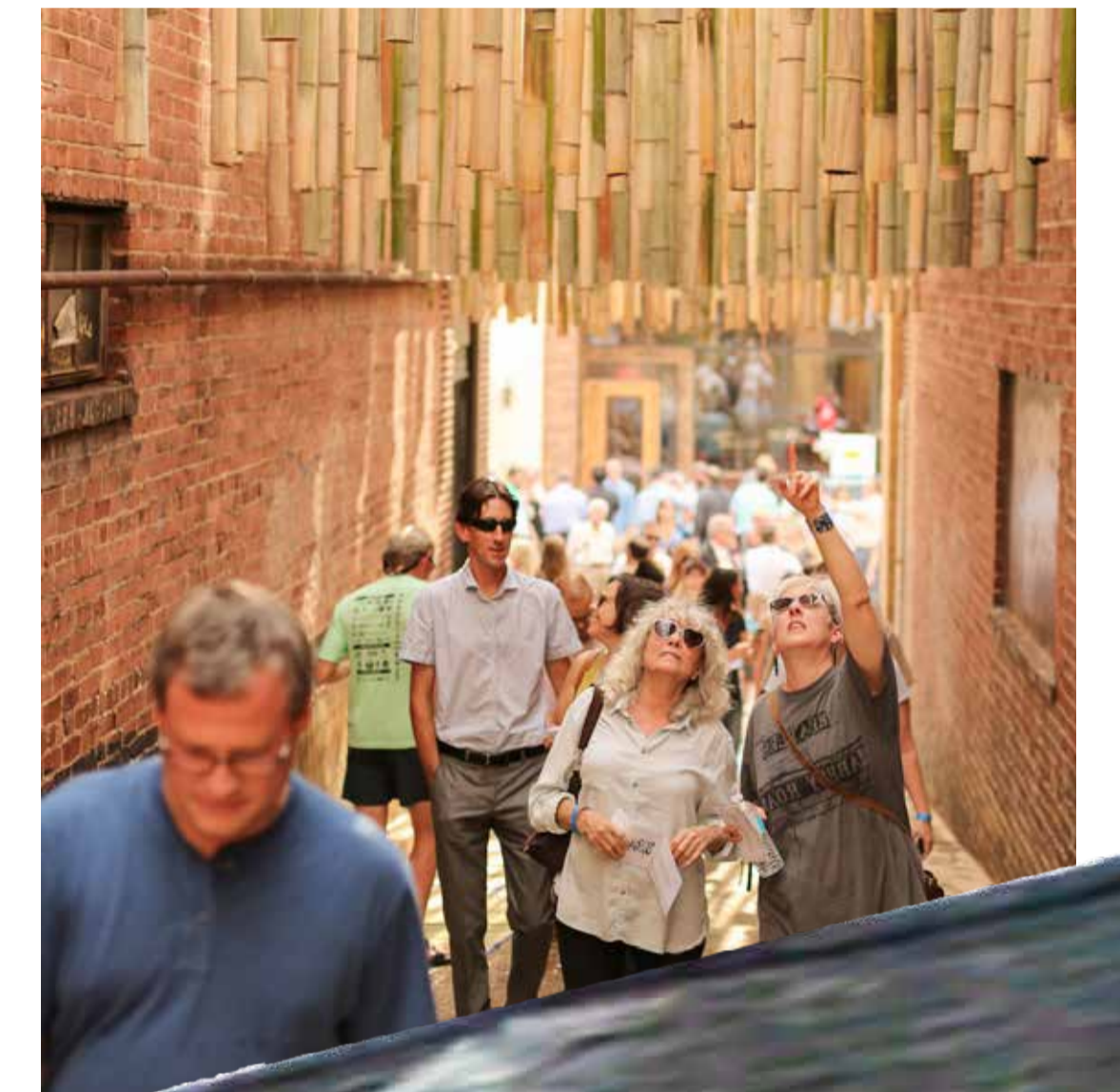
Prioritising safe access to both schools, the preschools and the creche through traffic calming and a focus on walking and cycling.



l

Walk & Cycle Network

Capitalising on Enfield's compact layout by creating better connections for walking and cycling throughout. This must include opening more routes between the town centre and residential areas.





Community

Finally the three draft projects on this board aim to inject more **life and vitality** into Enfield. Many of these are suited to **smaller, less expensive projects** that can take place **in the shorter term**.

m

Community Spaces

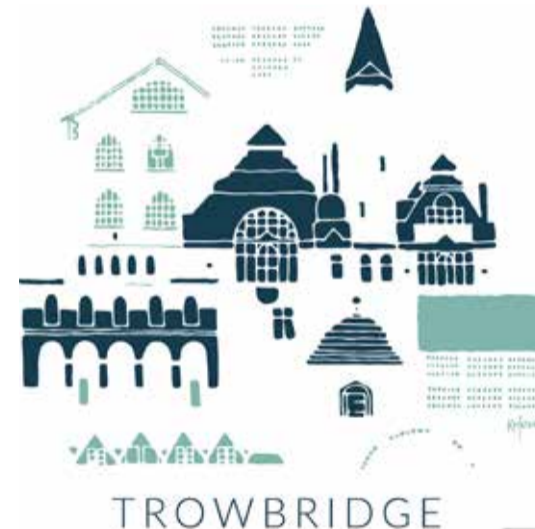
Working to coordinate and enhance access to community spaces, including the Community Hall and schools.



n

Enfield Art + Town Brand

Sharing Enfield's stories through art initiatives, sculptures and developing the Enfield Brand.



o

Pop-up Enfield

Energising Enfield through more temporary pop up activities and coordinated community events, both large and small.



The Draft Town Centre First Plan



Rialtas na hÉireann
Government of Ireland

ENFIELD TOWN TEAM

comhairle chontae na mí
meath county council

thepaulhogarthcompany

[9]

The draft Town Centre First Plan for Enfield comprises 15 exciting **projects as shown below.**

Help us develop this thinking by **giving your feedback** and ideas for making Enfield the best possible place for all.

MAIN STREET

- a Main Street
- b The Square (masterplan)
- c The Bypass
- d Dublin Road

GREEN AND BLUE

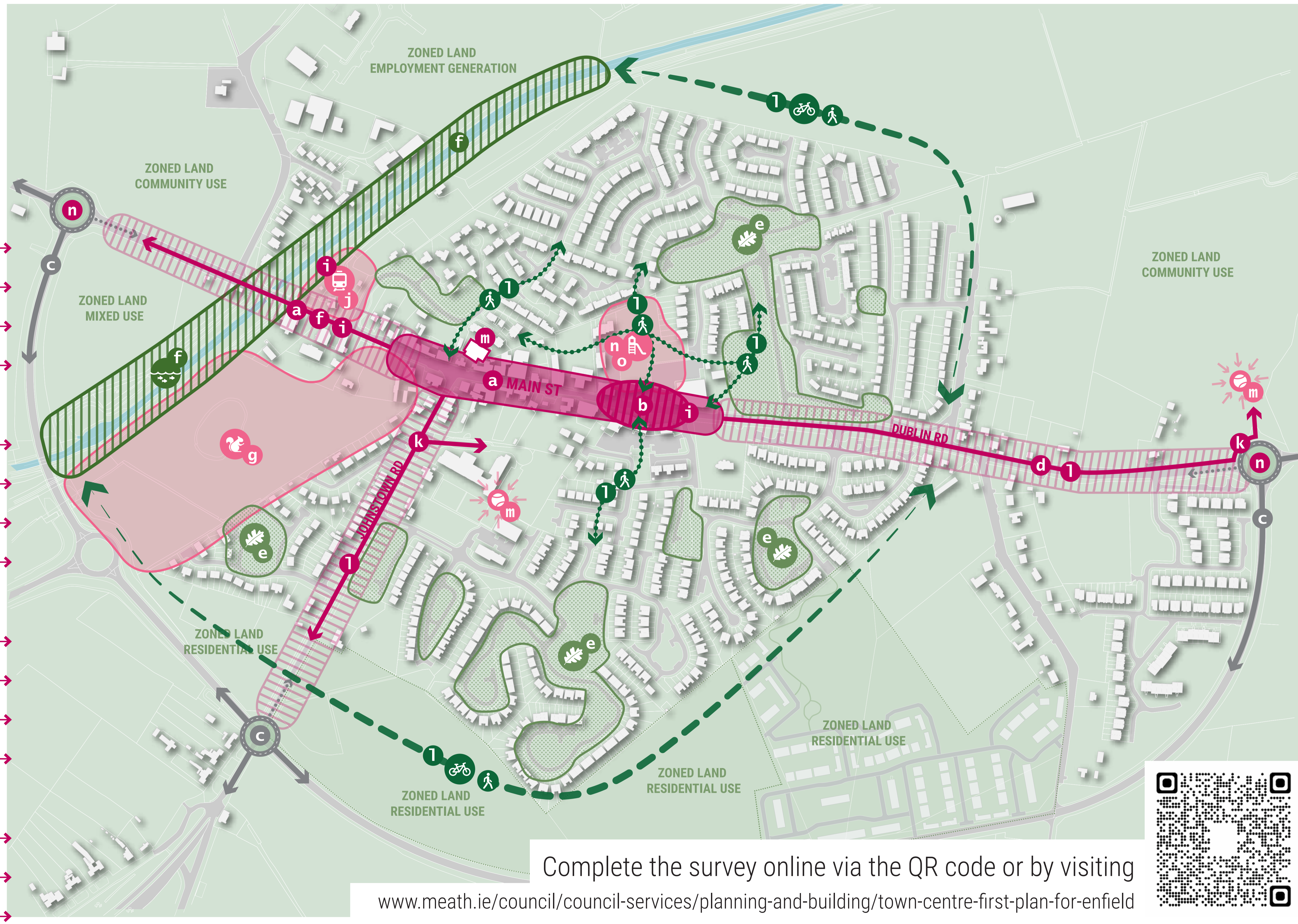
- e Green Enfield
- f The Canal
- g The Park (masterplan)
- h The Digital

LINKAGES

- i Bus and Train Network
- j The Station
- k The Town's Schools
- l Walk and Cycle Network

COMMUNITY

- m Community Spaces
- n Enfield Art + Brand
- o Pop-Up Enfield



Complete the survey online via the QR code or by visiting www.meath.ie/council/council-services/planning-and-building/town-centre-first-plan-for-enfield