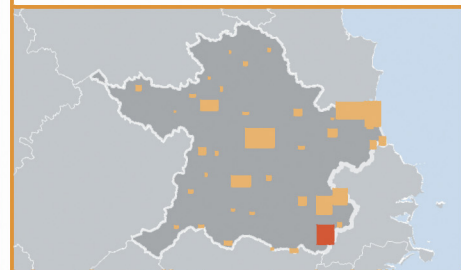
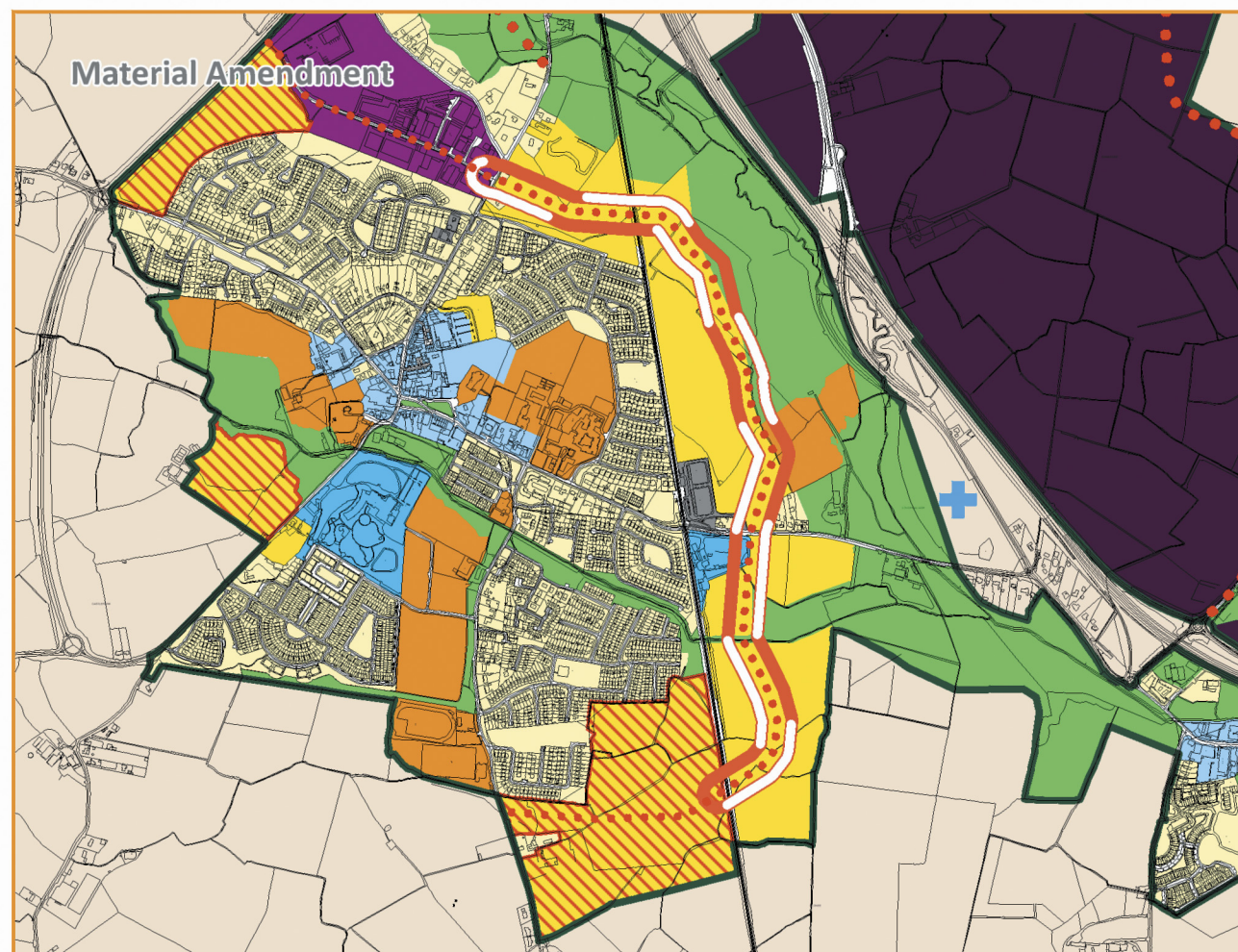
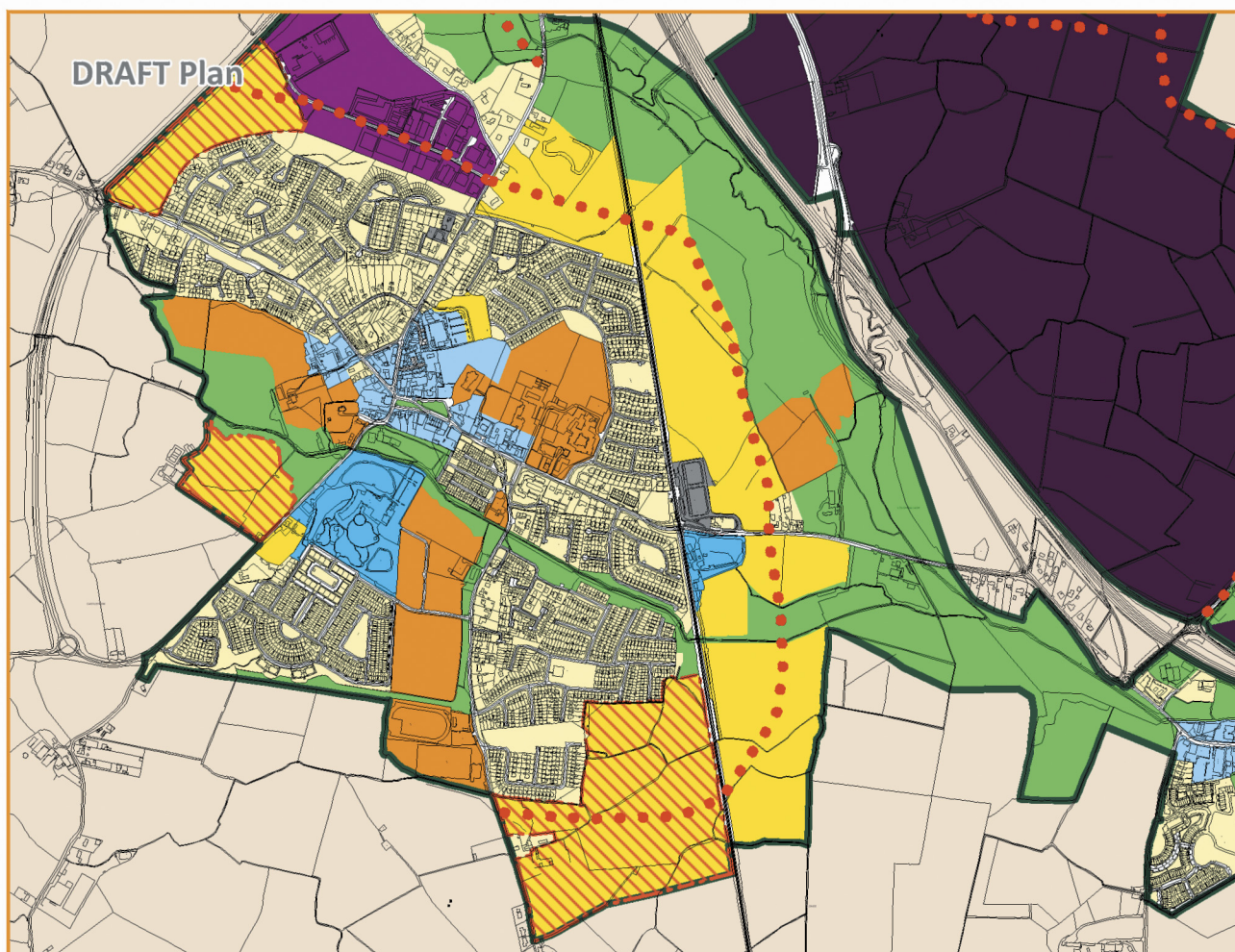
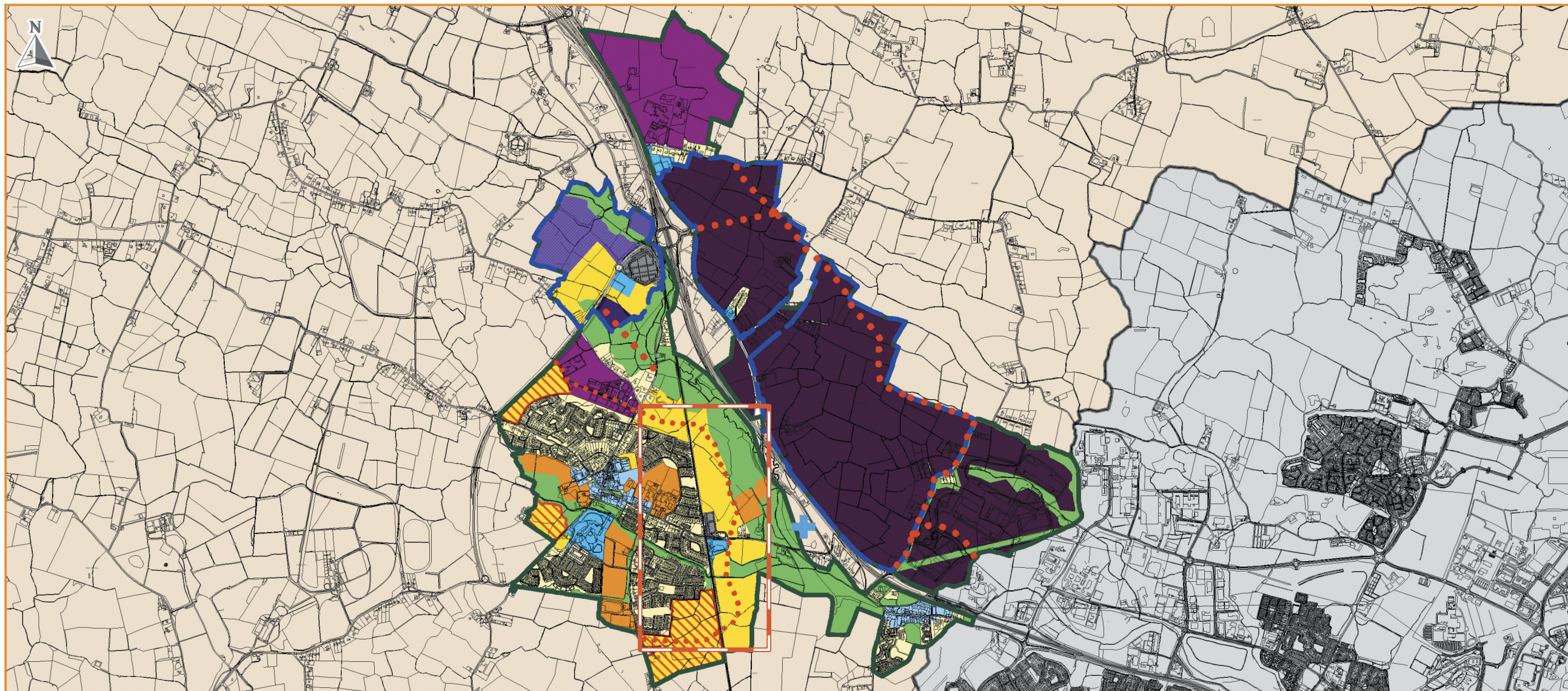


LEGEND

Zoning Objectives

- A1 - Existing Residential
- A2 - New Residential
- B1 - Commercial/ Town or Village Centre
- C1 - Mixed Use
- E1/E3 - Strategic Employment Zones (High Technology Uses)/ Warehousing & Distribution
- E2 - General Enterprise and Employment
- E2/E3 - General Enterprise and Employment/ Warehousing and Distribution
- E3 - Warehousing and Distribution
- F1 - Open Space
- G1 - Community Infrastructure
- TU - Transport and Utilities
- RA - Rural Area
- Settlement Boundary
- Fingal County Council - Administrative Area
- A2 Phasing - Residential land not available for development until post 2027
- Masterplan Boundary
- Strategic Employment Site
- Transport - Indicative Road Route
- Future Gateway Building



comhairle chontae na mí
meath county council

An Roinn um Pleanáil
Planning Department

Further information:
email: planning@meathcoco.ie
<http://countydevelopmentplanreview.meath.ie/>

Date: May 2021
Scale: N.T.S.
© Ordnance Survey Ireland. All rights reserved.
Licence number 2021/151/NMA/Meath County Council