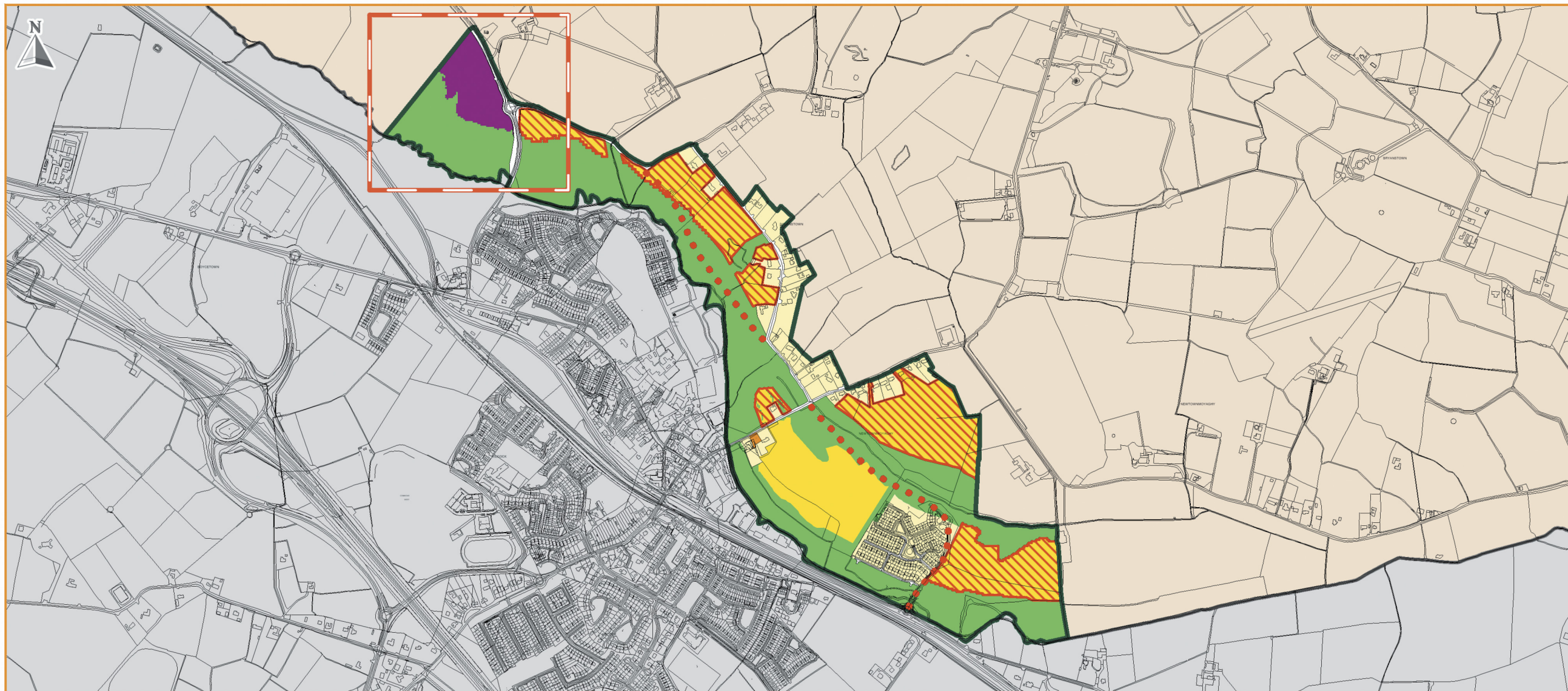


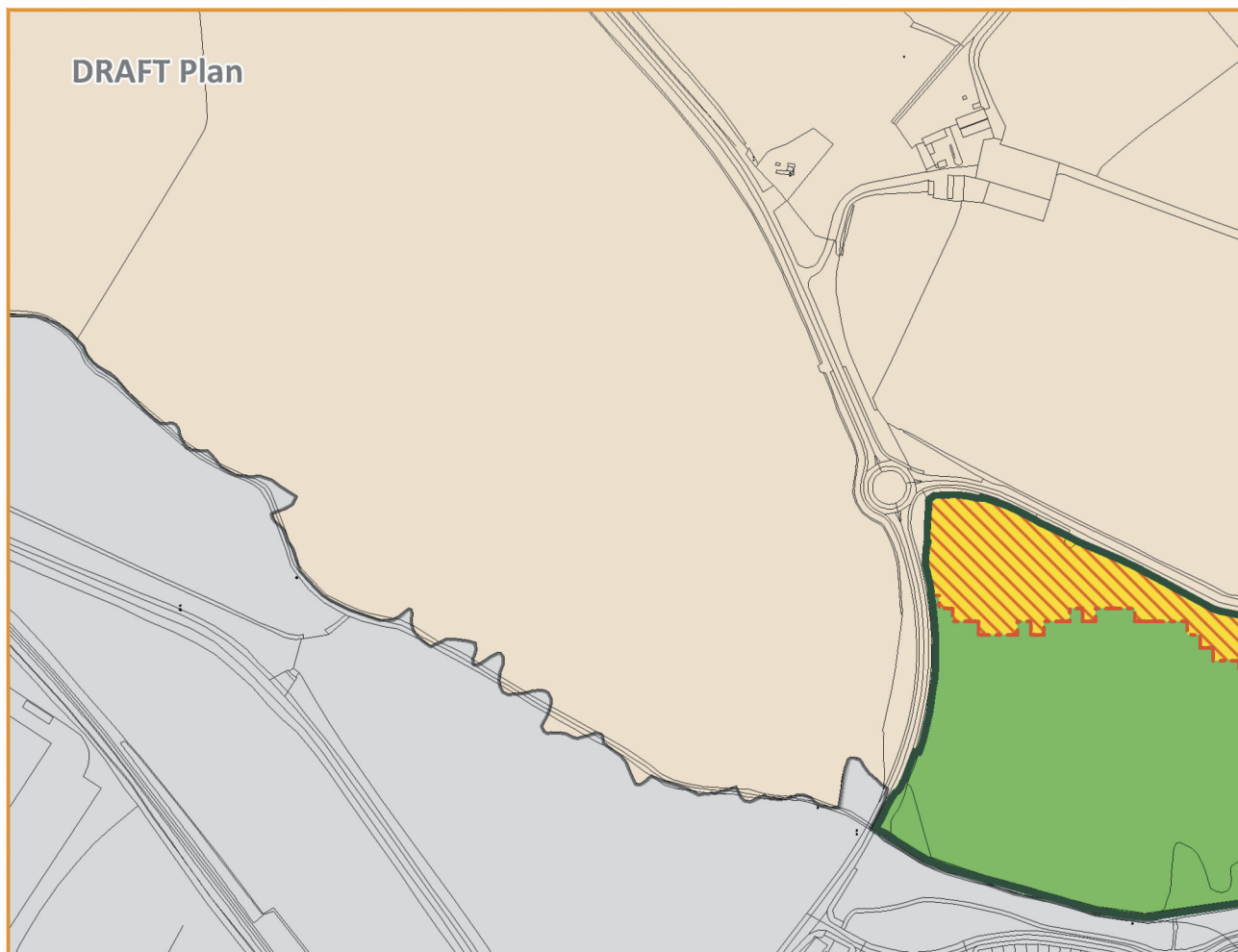
LEGEND

Zoning Objectives

-  A1 - Existing Residential
-  A2 - New Residential
-  F1 - Open Space
-  G1 - Community Infrastructure
-  E2 - General Enterprise and Employment
-  RA - Rural Area
-  Settlement Boundary
-  Kildare County Council - Administrative Area
-  A2 Phasing - Residential land not available for development until post 2027
-  Transport - Indicative Road Route



DRAFT Plan



Material Amendment

