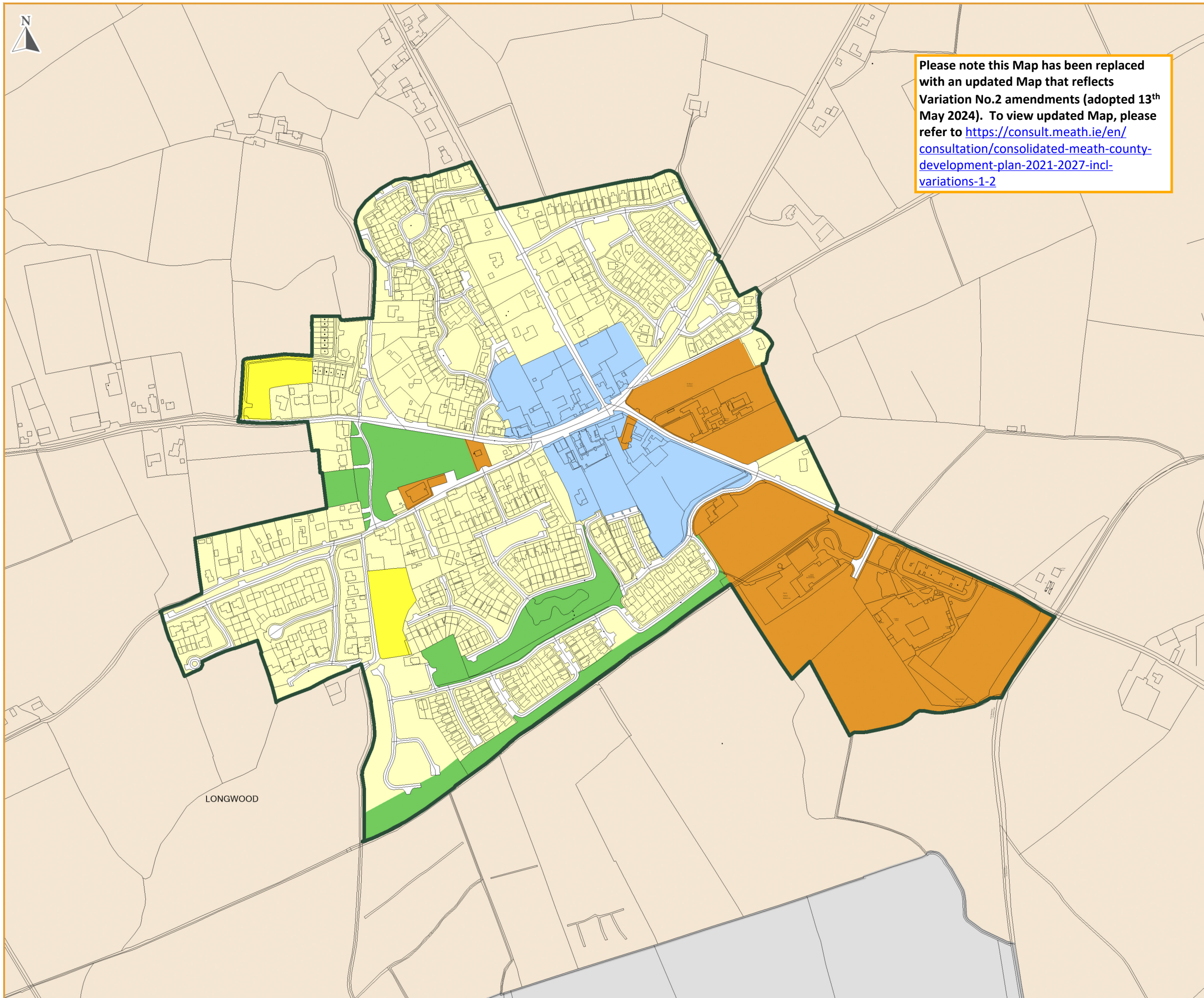




Please note this Map has been replaced with an updated Map that reflects Variation No.2 amendments (adopted 13th May 2024). To view updated Map, please refer to <https://consult.meath.ie/en/consultation/consolidated-meath-county-development-plan-2021-2027-incl-variations-1-2>



LONGWOOD

LEGEND
Zoning Objectives

- A1 - Existing Residential
- A2 - New Residential
- B1 - Commercial Town or Village Centre
- F1 - Open Space
- G1 - Community Infrastructure
- RA - Rural Area
- Settlement Boundary
- Kildare County Council - Administrative Area

