

Client: MEATH COUNTY COUNCIL

Project: FAIR GREEN, OLDCASTLE

Title: DESCRIPTION OF THE PROPOSED UTILITIES

Date: JULY 2023

Revision: P2

TABLE OF CONTENTS

INTRODUCTION.....4

1 SECTION 1: UTILITY INFRASTRUCTURE4

1.1 ELECTRICITY (ESB NETWORKS).....4

1.2 BROADBAND (EIR)5

1.3 SITE LIGHTING5

1.4 GAS SUPPLY (GAS NETWORKS IRELAND).....5

CONCLUSION 5

P2	Part 8 Planning	KDL	AC	NP	NP	05/07/23
P1	Planning Issue	KDL	AC	NP	NP	03/07/23
Revision	Purpose	Originated	Checked	Reviewed	Authorised	Date

INTRODUCTION

Meath County Council, intend to apply for Part 8 Planning for the development at a site at Fair Green, Oldcastle. The design proposal is to consist of public lighting and cctv for a new public play park development at Fair Green, old Castle, Co Meath.

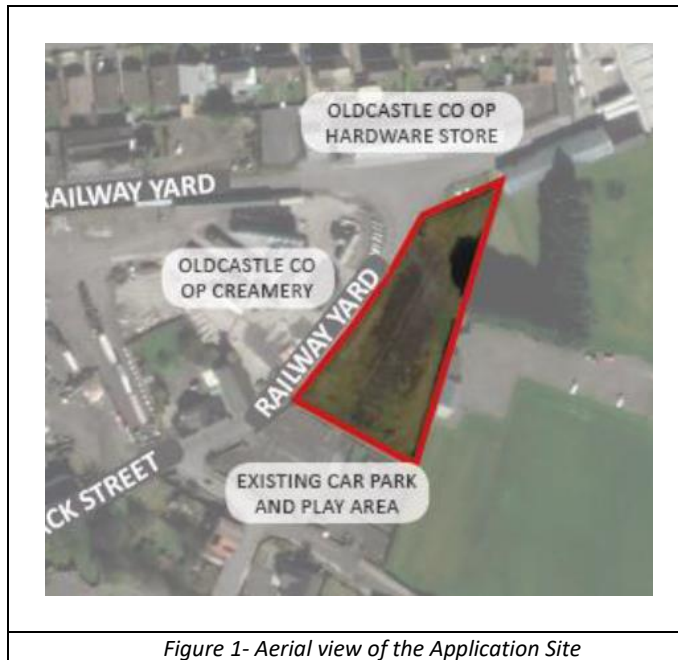


Figure 1- Aerial view of the Application Site

1 SECTION 1: UTILITY INFRASTRUCTURE

The utility infrastructure to serve the proposed public park will be tied into the existing service provider network systems.

The site services drawing (refer to dwg P055-PMEP-00-00-DR-ME-01) is provisional only and is subject to approval/discussion with each utility provider. The service connections will be provided by or on behalf of the statutory undertaker under their statutory powers.

The site services drawing has been populated to include ESB services and quantity indicated are an estimation based on previous experience with the various utility providers.

(Note: The description of utility services to the development as outlined below is subject to utility applications being completed and final design from each service provider issued).

1.1 ELECTRICITY (ESB NETWORKS)

ESB Networks have been contacted and an existing ESB network map for the area surrounding the proposed development has been obtained.

There are existing ESB Networks infrastructure in the vicinity of the site including an overhead line which will need to be relocated, (refer to dwg P055-PMEP-00-00-DR-ME-01)

The development incorporates a dedicated ESB mini pillar to provide an LV supply to public lighting.

1.2 BROADBAND (EIR)

EIR, Virgin Media (VM) have been contacted and their existing maps for the area surrounding the proposed development has been obtained.

Their services are not required for this development.

1.3 SITE LIGHTING

Each light fitting will be controlled via an individual Photoelectric Control Unit (PECU). All lamps selected will have an energy efficient, DALI type, drivers and as a result are dimmable. Dimming of the lamp will be controlled via an astronomical clock which is built into the circuit board of the luminaire and including motion sensing.

Refer to the site lighting layout and lux levels drawings, detailed on P055-PMEP-00-00-DR-E-01 & P055-PMEP-00-00-DR-E-02 respectfully.

For details of the proposed site lighting design, please refer to the Site Lighting Report and the site lighting drawings included with this application.

1.4 GAS SUPPLY (GAS NETWORKS IRELAND)

Gas supply is not required for this development.

CONCLUSION

Section 1: UTILITY INFRASTRUCTURE:

Based on the initial review, there is sufficient utility infrastructure in the area for the Fair Green, Oldcastle Public Park.