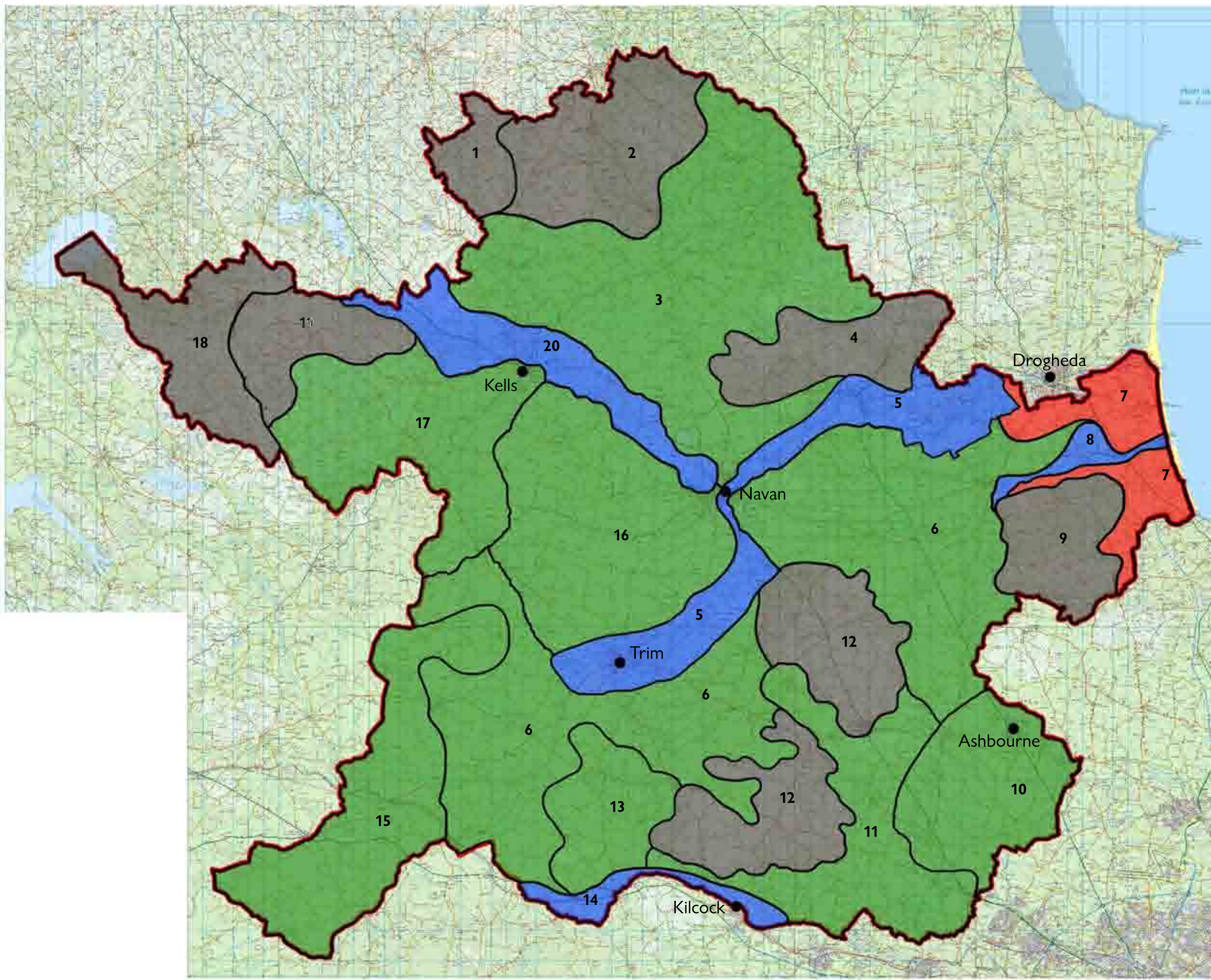


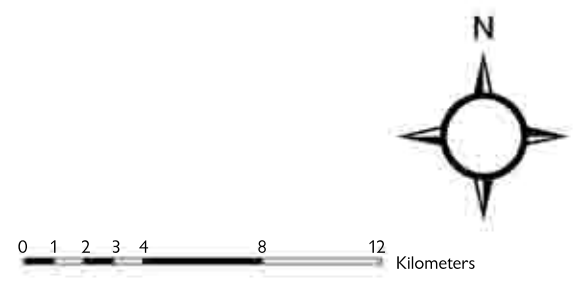
map 1	landscape character types
map 2	landscape character areas
map 3	landscape sensitivity
map 4	landscape capacity
map 5	views included in Volume 3, Map series 9.5
map 6	landmarks
map 7	pre history landscape
map 8	protected churches
map 9	mediaeval landscape
map 10	18th and 19th century protected churches
map 11	topography
map 12	geology
map 13	soils
map 14	hydrology
map 15	land use
map 16	ecological sites
map 17	settlements
map 18	tourist attractions



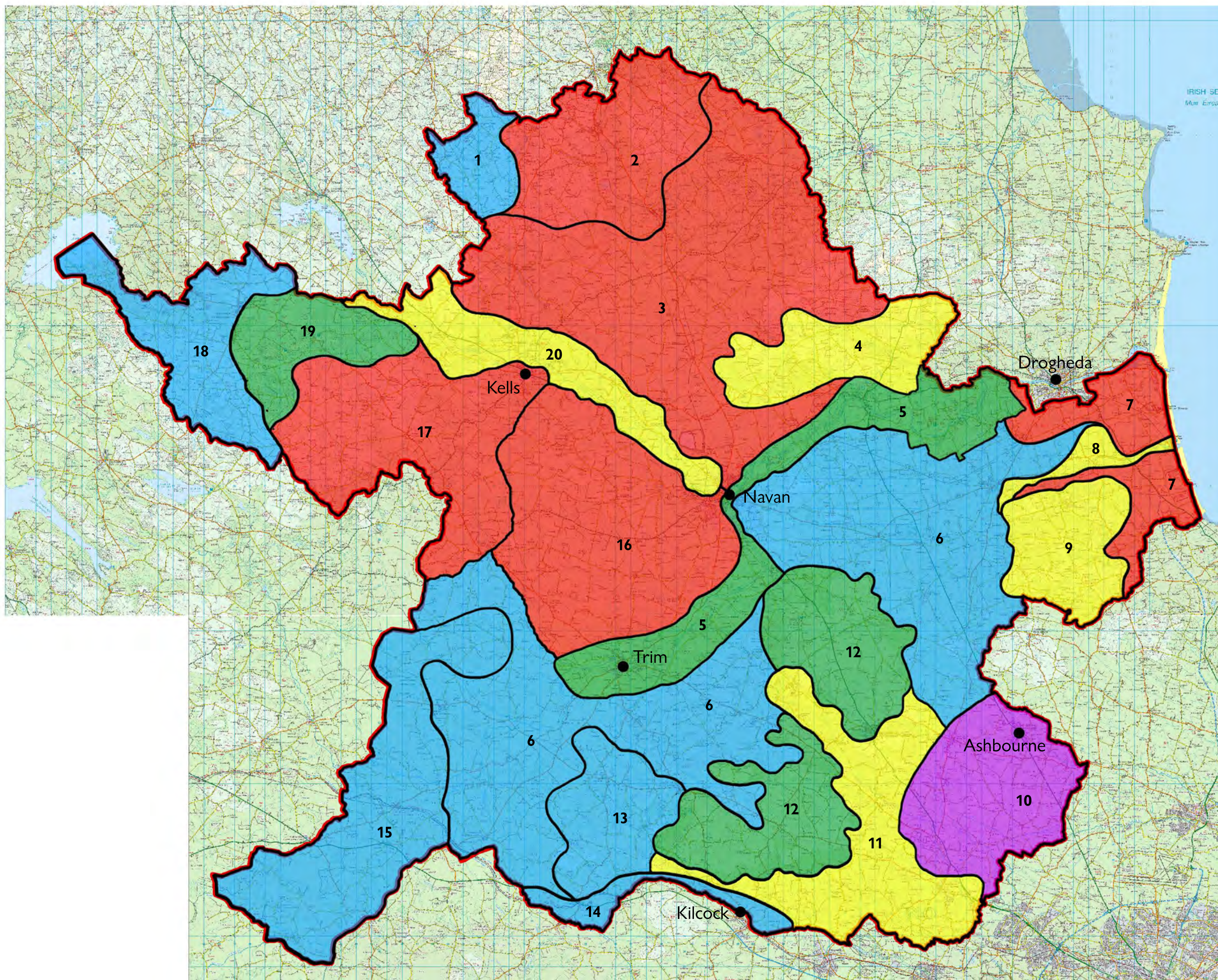
KEY

1. Teervurcher Uplands
2. North Meath Lakelands
3. North Navan Lowlands
4. Rathkenny Hills
5. Boyne Valley
6. Central Lowlands
7. Coastal Plains
8. Nanny Valley
9. Bellewstown Hills
10. The Ward Lowlands
11. South East Lowlands
12. Tara Skryne Hills
13. Rathmoylan Lowlands
14. Royal Canal
15. South West Lowlands
16. West Navan Lowlands
17. South West Kells Lowlands
18. Lough Sheelin Uplands
19. Loughcrew & Slieve na Calliagh Hills
20. Blackwater Valley





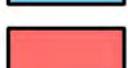

 Landscape Character Area Boundary
 River Corridors and Estuaries
 Lowland Landscapes
 Hills and Upland Areas
 Coastal Landscape





map 01: landscape character types

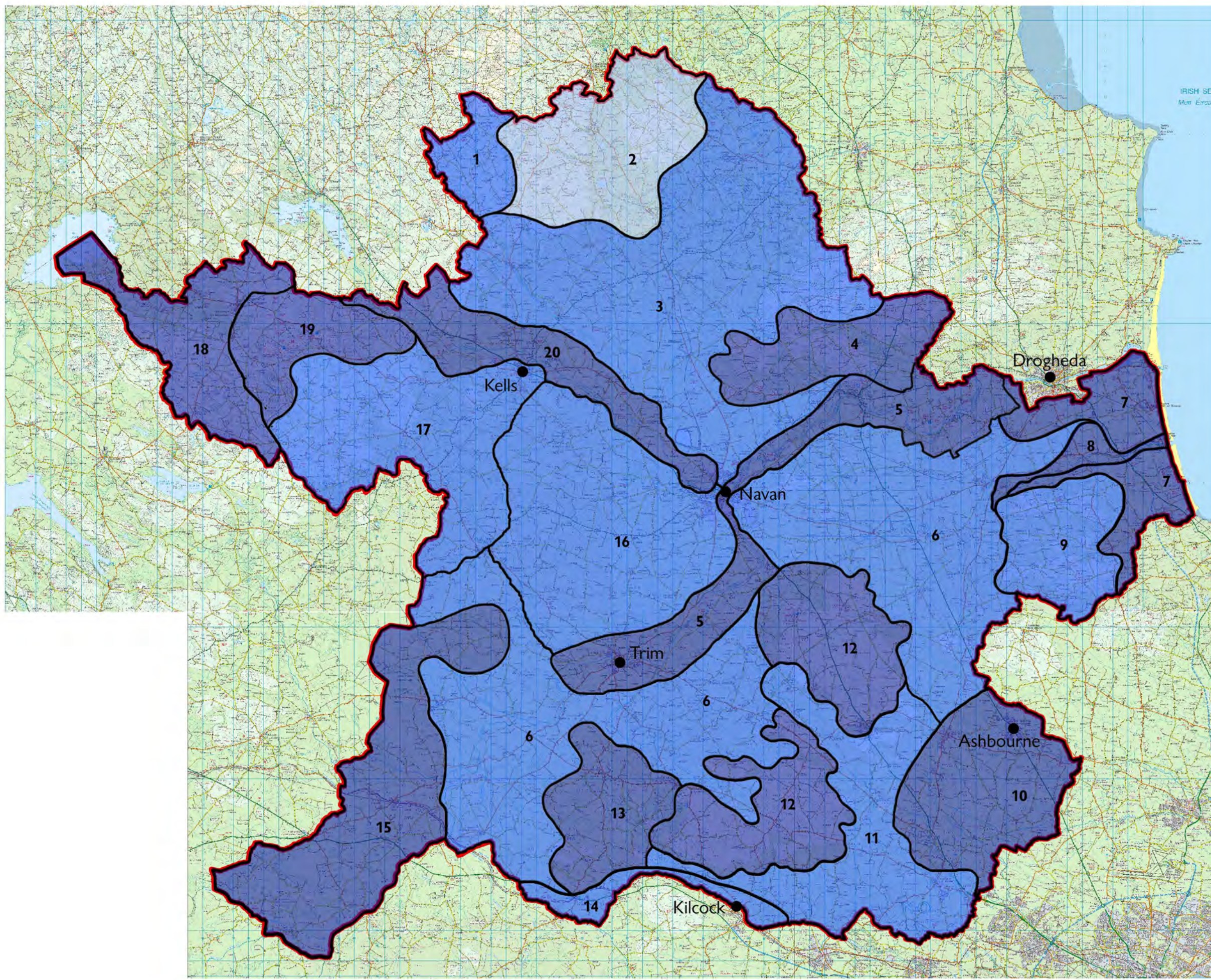


- KEY**
1. Teervurcher Uplands
 2. North Meath Lakelands
 3. North Navan Lowlands
 4. Rathkenny Hills
 5. Boyne Valley
 6. Central Lowlands
 7. Coastal Plains
 8. Nanny Valley
 9. Bellewstown Hills
 10. The Ward Lowlands
 11. South East Lowlands
 12. Tara Skryne Hills
 13. Rathmoylan Lowlands
 14. Royal Canal
 15. South West Lowlands
 16. West Navan Lowlands
 17. South West Kells Lowlands
 18. Lough Sheelin Uplands
 19. Loughcrew & Slieve na Calliagh Hills
 20. Blackwater Valley


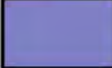


 Landscape Character Area Boundary
 Exceptional Value
 Very High Value
 High Value
 Moderate Value
 Low Value

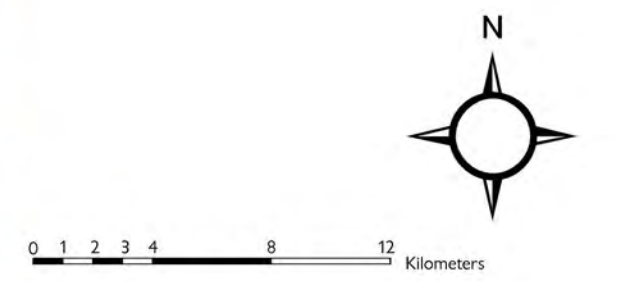



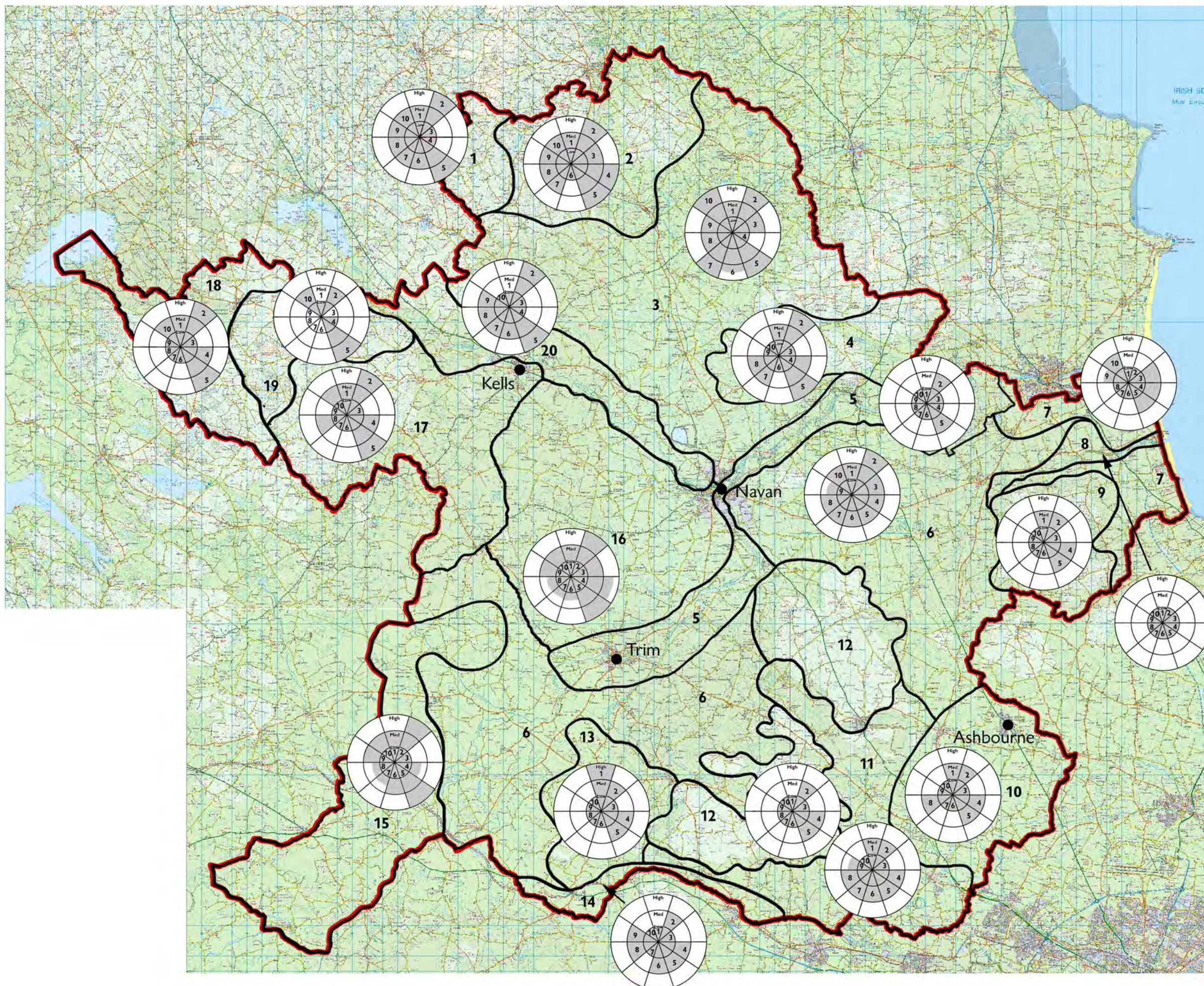
map 02: landscape character areas



- KEY**
1. Teervurcher Uplands
 2. North Meath Lakelands
 3. North Navan Lowlands
 4. Rathkenny Hills
 5. Boyne Valley
 6. Central Lowlands
 7. Coastal Plains
 8. Nanny Valley
 9. Bellewstown Hills
 10. The Ward Lowlands
 11. South East Lowlands
 12. Tara Skryne Hills
 13. Rathmoylan Lowlands
 14. Royal Canal
 15. South West Lowlands
 16. West Navan Lowlands
 17. South West Kells Lowlands
 18. Lough Sheelin Uplands
 19. Loughcrew & Slieve na Calliagh Hills
 20. Blackwater Valley


 Landscape Character Area Boundary
 High Sensitivity
 Moderate Sensitivity
 Low Sensitivity





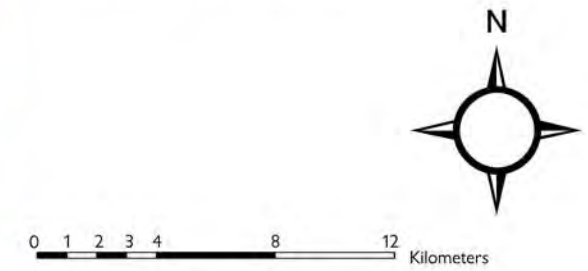
KEY

1. Teervurcher Uplands
2. North Meath Lakelands
3. North Navan Lowlands
4. Rathkenny Hills
5. Boyne Valley
6. Central Lowlands
7. Coastal Plains
8. Nanny Valley
9. Bellewstown Hills
10. The Ward Lowlands
11. South East Lowlands
12. Tara Skryne Hills
13. Rathmoylan Lowlands
14. Royal Canal
15. South West Lowlands
16. West Navan Lowlands
17. South West Kells Lowlands
18. Lough Sheelin Uplands
19. Loughcrew & Slieve na Calliagh Hills
20. Blackwater Valley

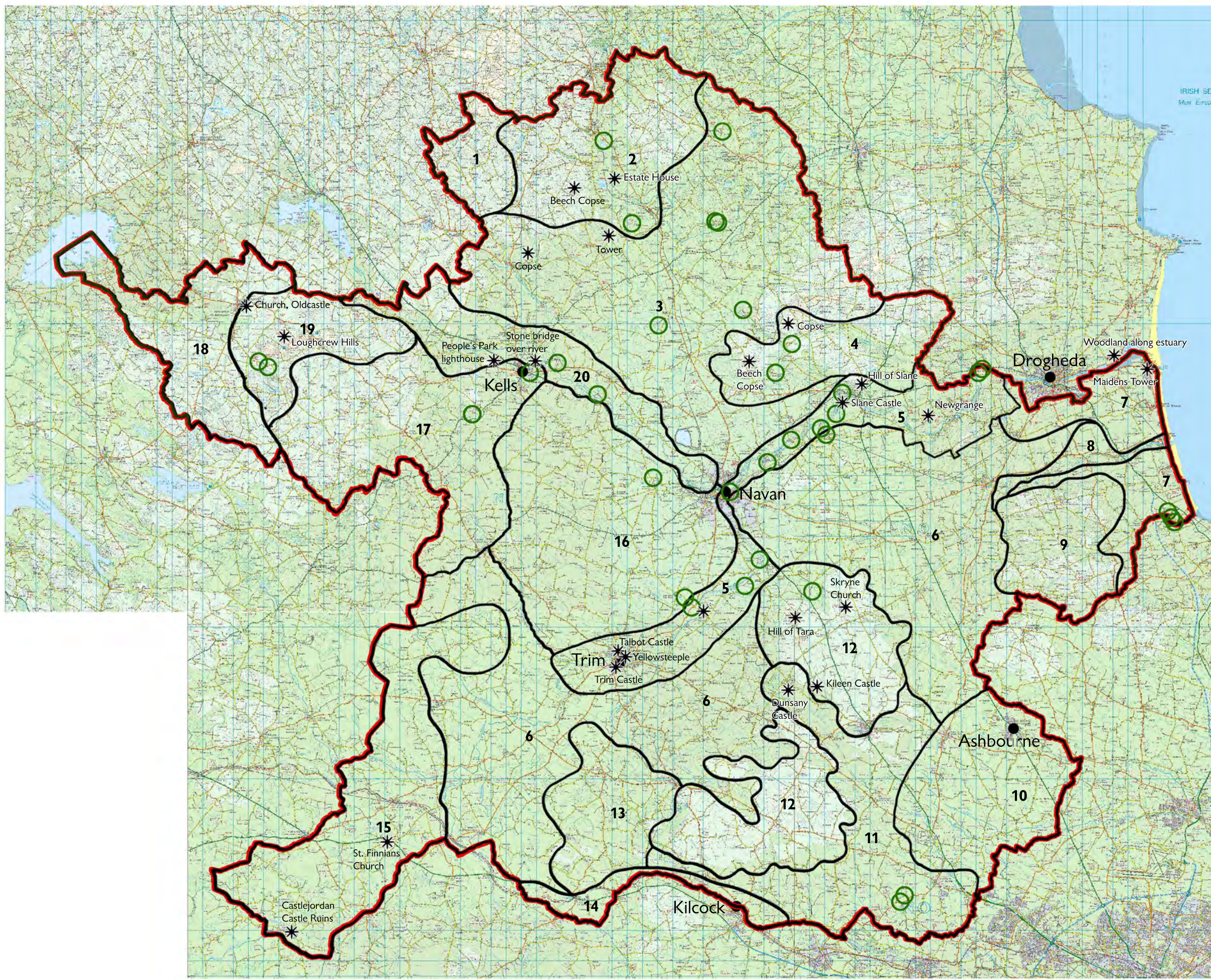
 Landscape Character Area Boundary

Likely Indicative Types of Development

1. Large farm buildings
2. Visitor facilities
3. Multi-house developments
4. One-off houses
5. Conversion of existing buildings
6. Overhead cables, substations and masts
7. Roads and railways
8. Underground services
9. Wind turbines
10. Biomass and forestry



map 04: landscape capacity



KEY

○ Measured Trees

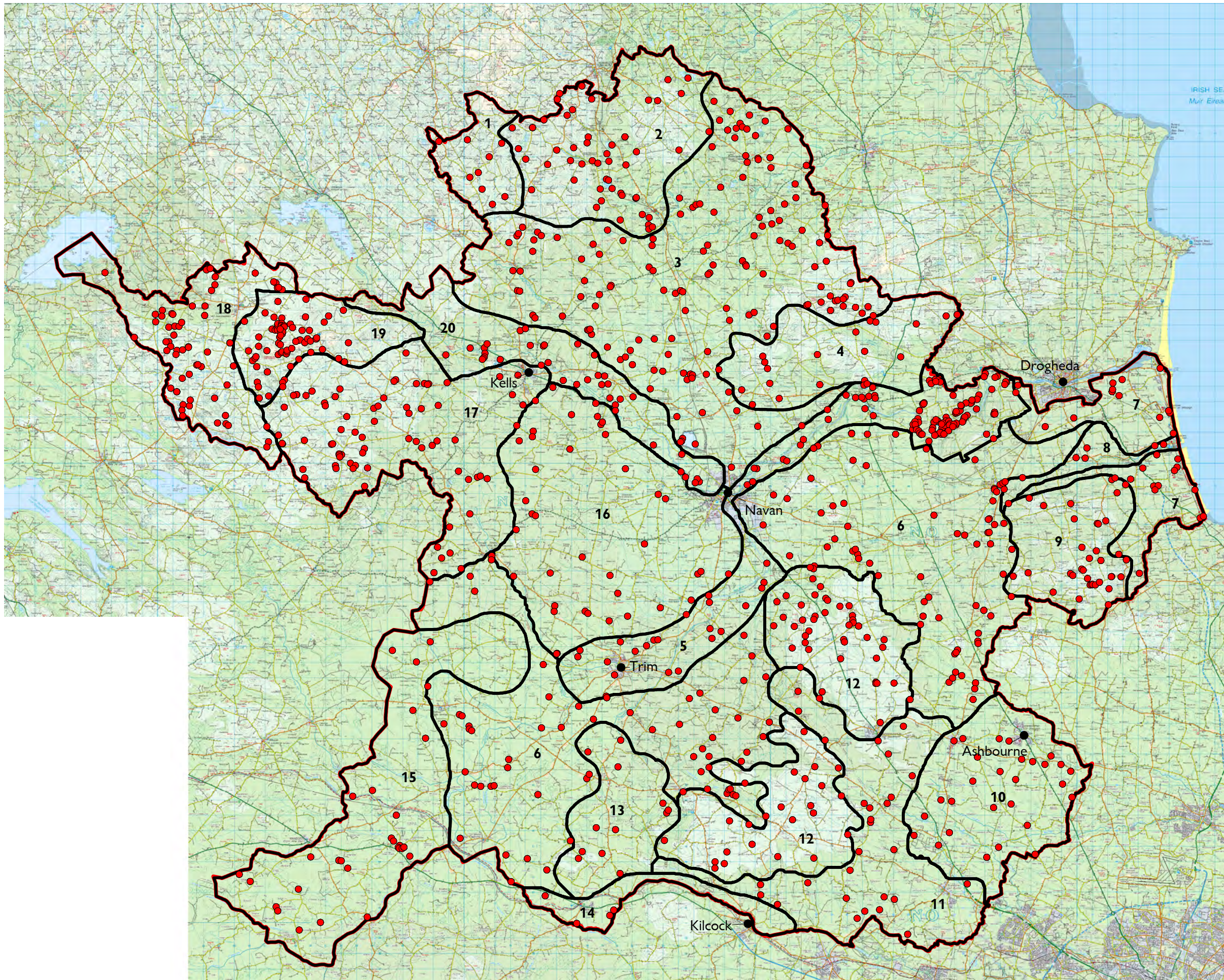
* Other Landmarks

7 Landscape Character Area Boundary




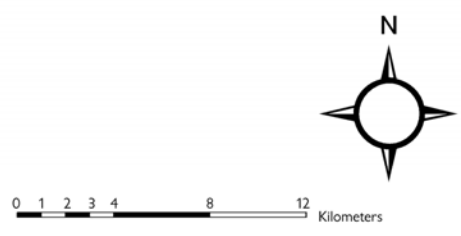
0 1 2 3 4 8 12 Kilometers

map 06: landmarks

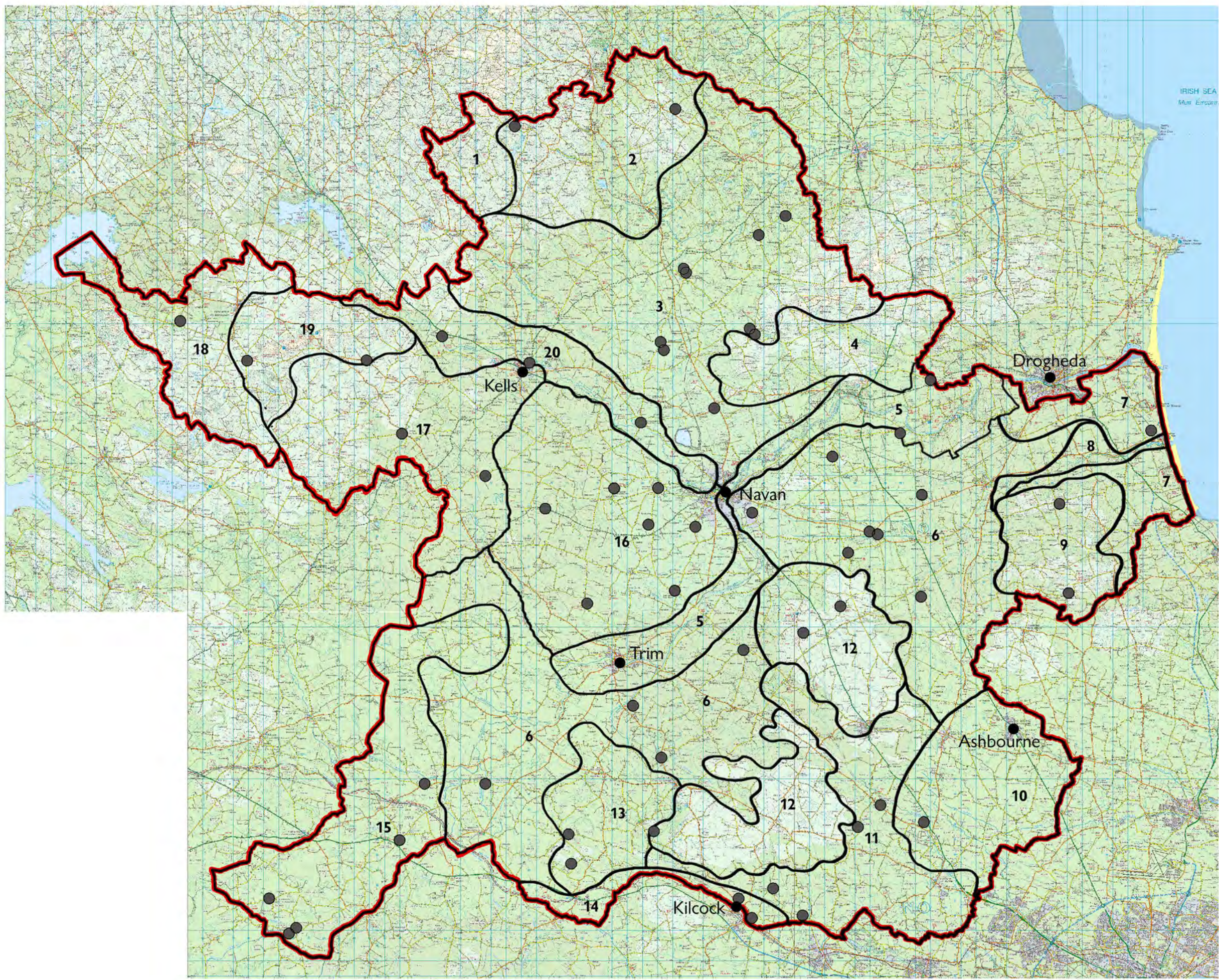


KEY

- Registered Monuments
-  Landscape Character Boundary

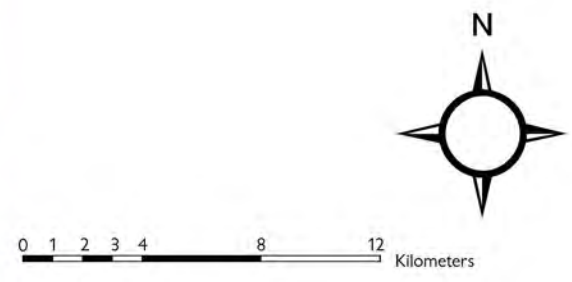


map 07: pre history landscape

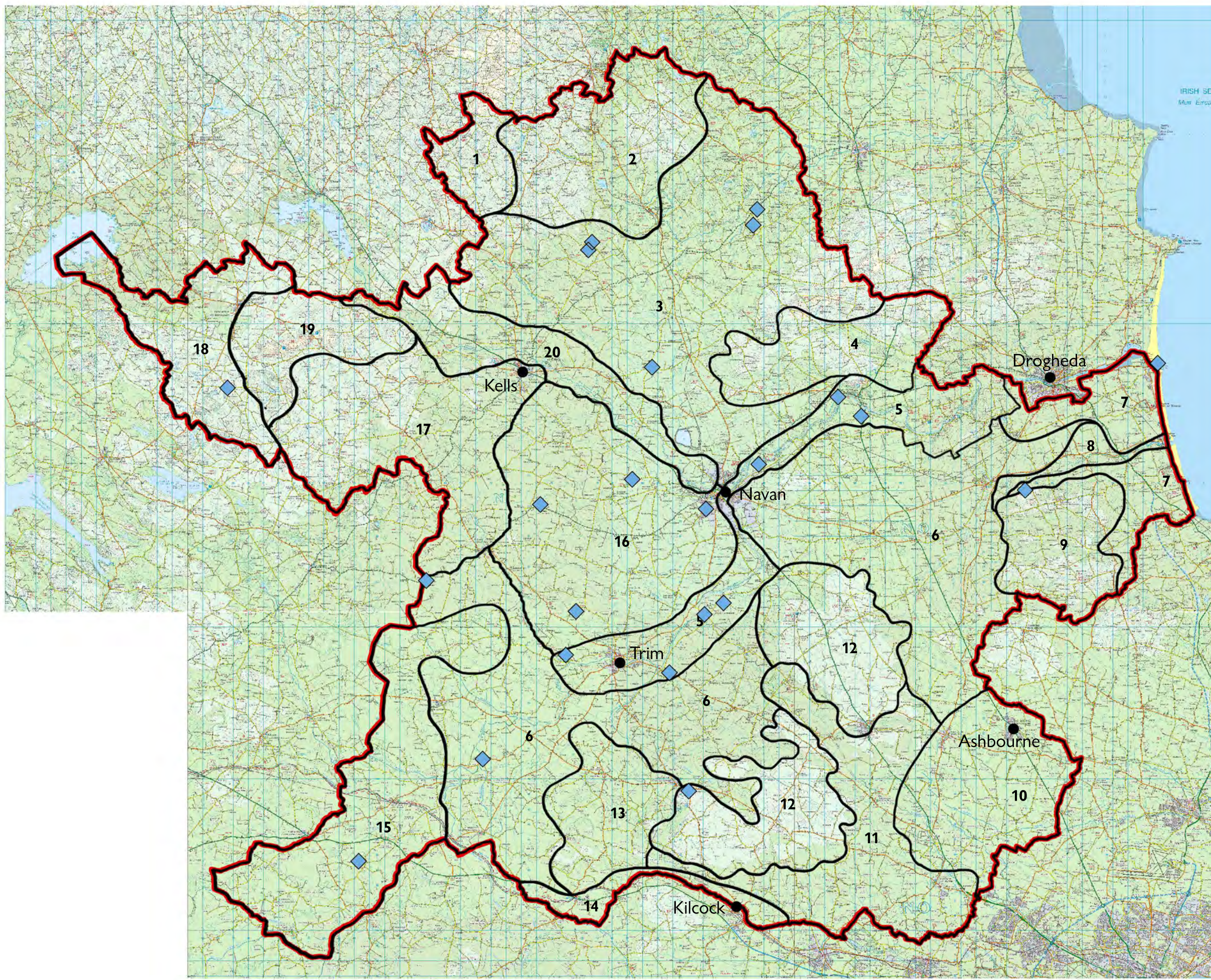


KEY



- Site of Protected Church
- 7 Landscape Character Area Boundary



map 08: protected churches

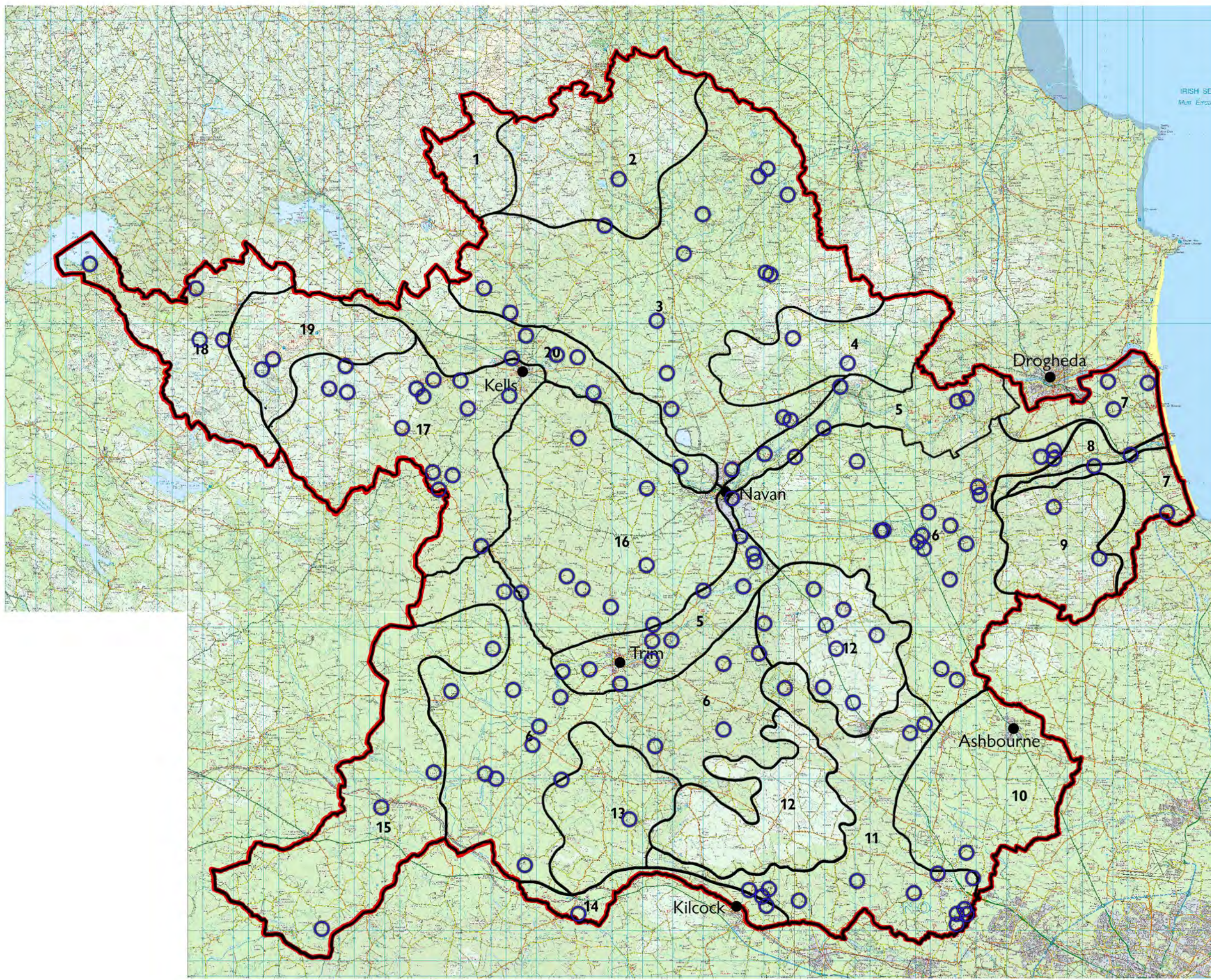


KEY



-  Site of Medieval Structure
-  Landscape Character Area Boundary

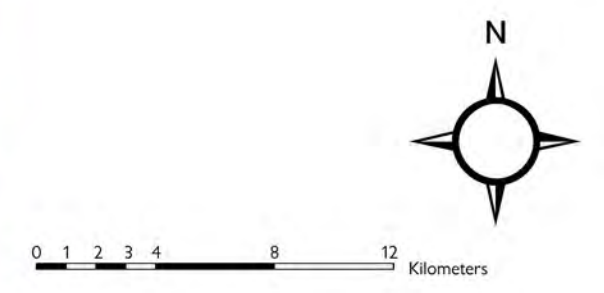


A north arrow pointing upwards and a scale bar in kilometers, marked from 0 to 12 (with intermediate marks at 1, 2, 3, 4, 8).

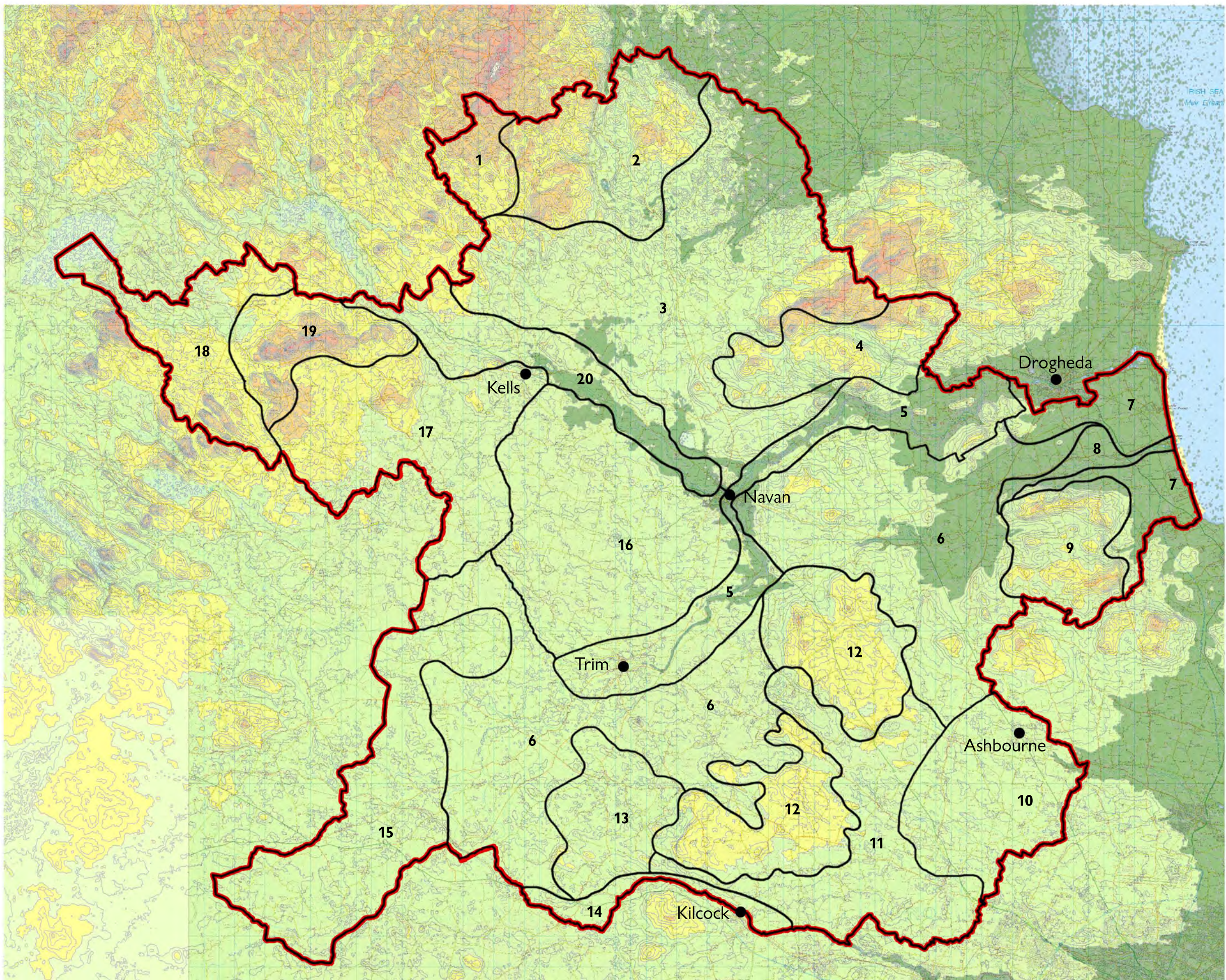


KEY

-  Site of 18th and 19th Century Protected Churches
-  Landscape Character Area Boundary



map 10: 18th and 19th century protected churches

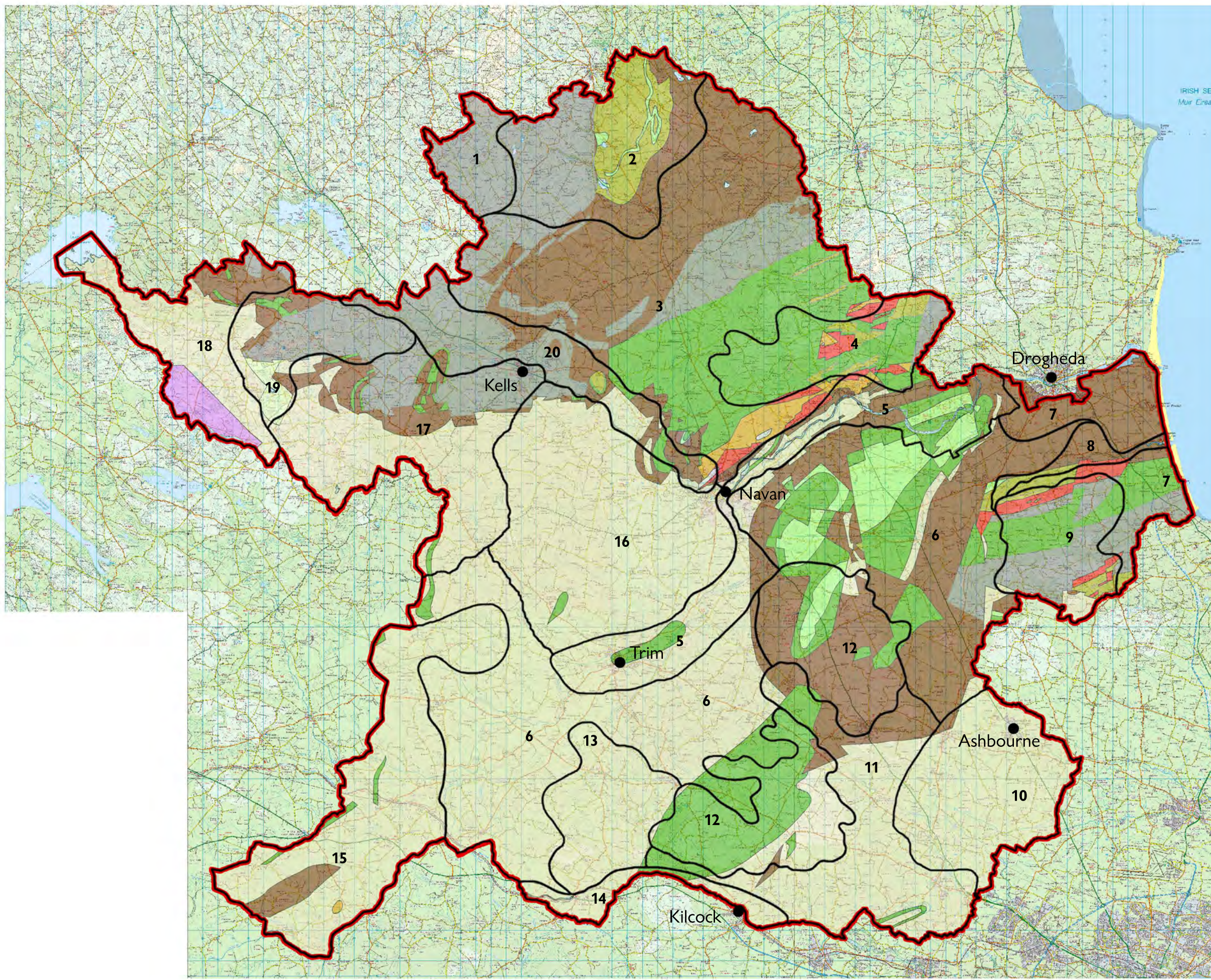


KEY

- 0 - 50m contour
- 50 - 100m contour
- 100 - 150m contour
- 150 - 200m contour
- 200 - 250m contour
- 250m + contour
- 7
 Landscape Character Area Boundary

0 1 2 3 4 8 12 Kilometers

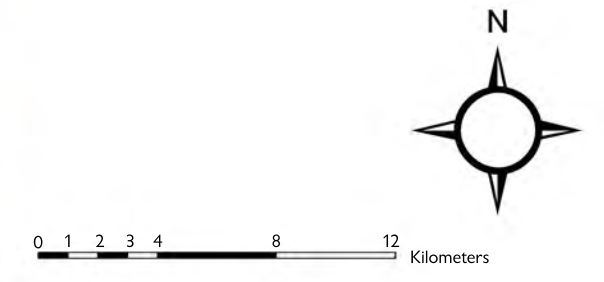
map 11: topography



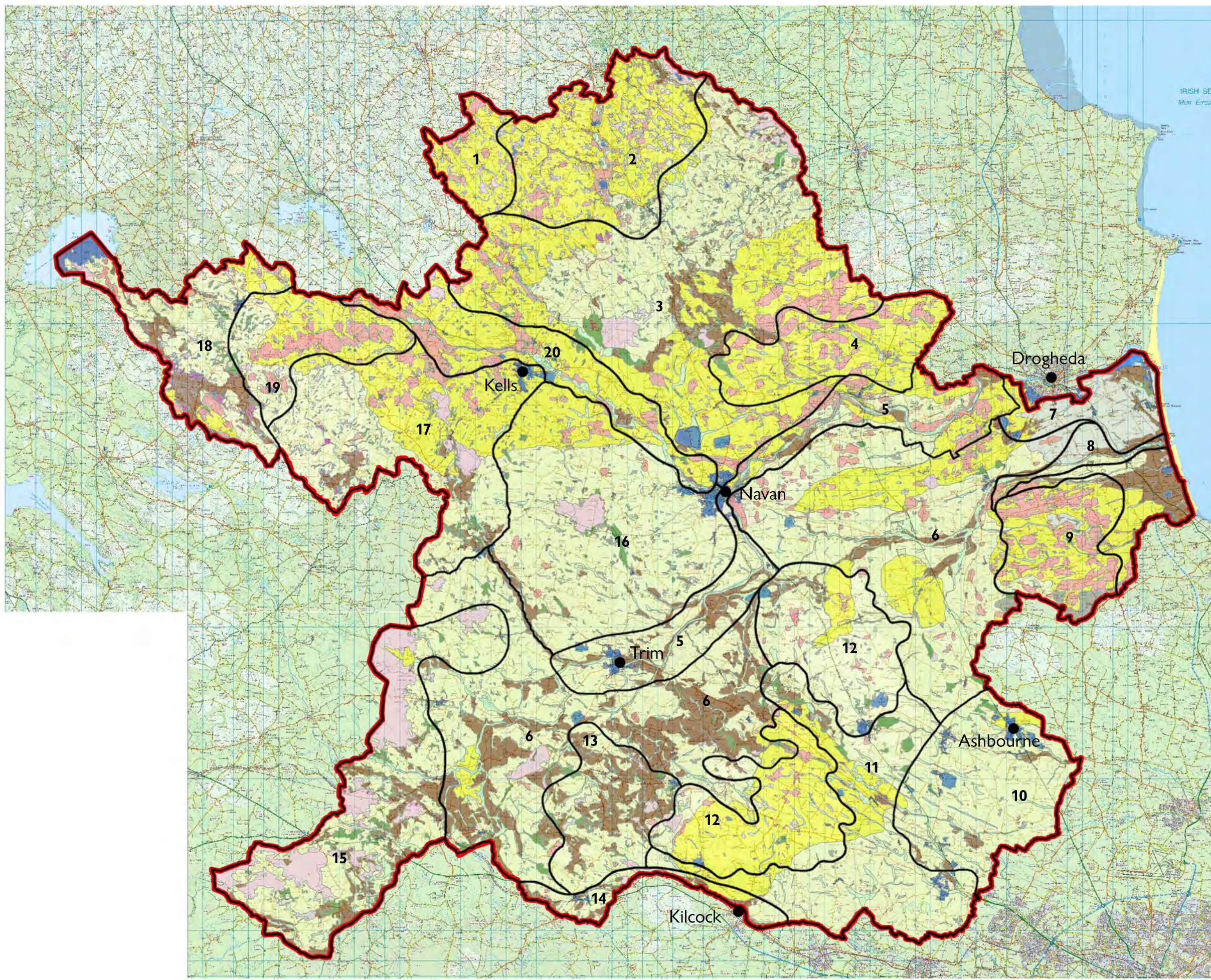
KEY

- Basalts and glassy tuffs, (with/without siltstone or breccia)
- Calp limestone and massive, even-grained or clean limestones
- Chert with thin limestones
- Chert with thin siltstones
- Granites and diorites
- Greywacke and clean sandstones
- Massive and tuffaceous volcanic rocks
- Micaceous and pebbly sandstones, and sandstones with conglomerate or siltstone
- Muddy, shaly or conglomeratic limestones, and limestones of variable grain size
- Shales with interbedded limestone or sandstone
- Shales, mudstones and siltstones (with/without ironstone, chert or gypsum)
- Syenite

Landscape Character Area Boundary

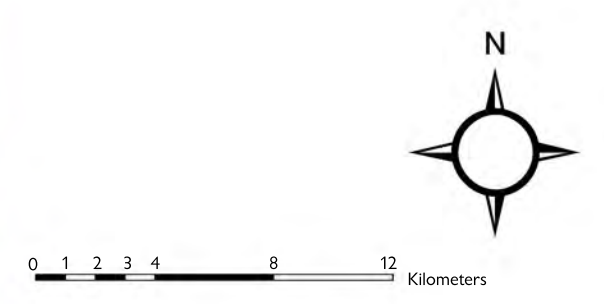


map 12: geology

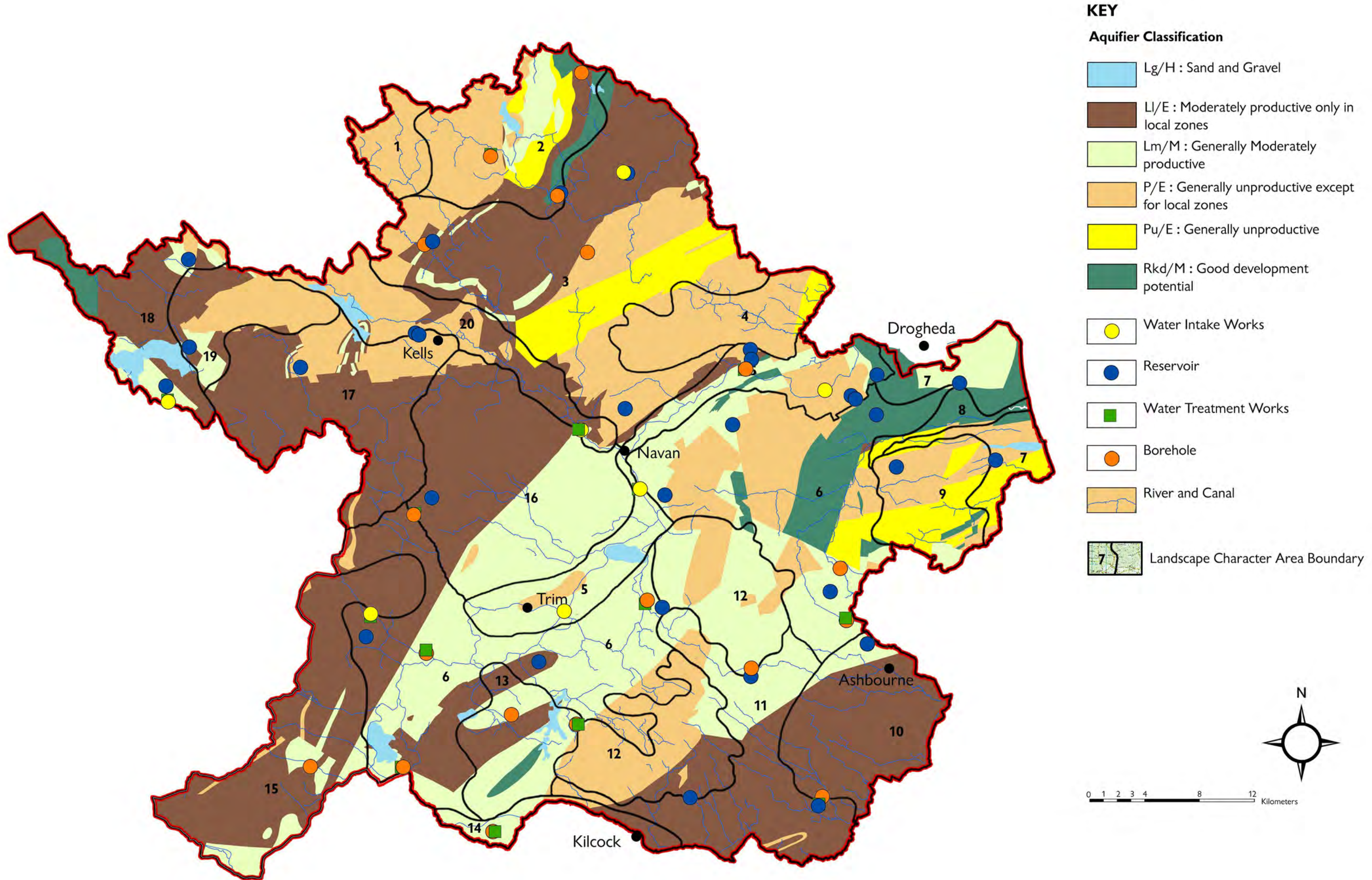


- KEY**
- Derived from mainly acidic parent materials } Deep well drained mineral
 - Derived from mainly basic parent materials } Deep well drained mineral
 - Derived from mainly acidic parent materials } Shallow well drained mineral
 - Derived from mainly basic parent materials } Shallow well drained mineral
 - Derived from mainly acidic parent materials } Deep poorly drained mineral
 - Derived from mainly basic parent materials } Deep poorly drained mineral
 - Derived from mainly acidic parent materials } Poorly drained mineral soils with peaty topsoil
 - Derived from mainly basic parent materials } Poorly drained mineral soils with peaty topsoil
 - Mineral podsolised soils and peaty topsoil with occasional iron pan layer
 - Mineral alluvium
 - Peaty alluvium
 - Marl type soils
 - Lacustrine alluviums
 - Lowland
 - Cutaway
 - Aeolian undifferentiated
 - Beach sand and gravels
 - Marine/ Estuarine sediments
 - Made Ground (formed by infilling)
 - Water Body

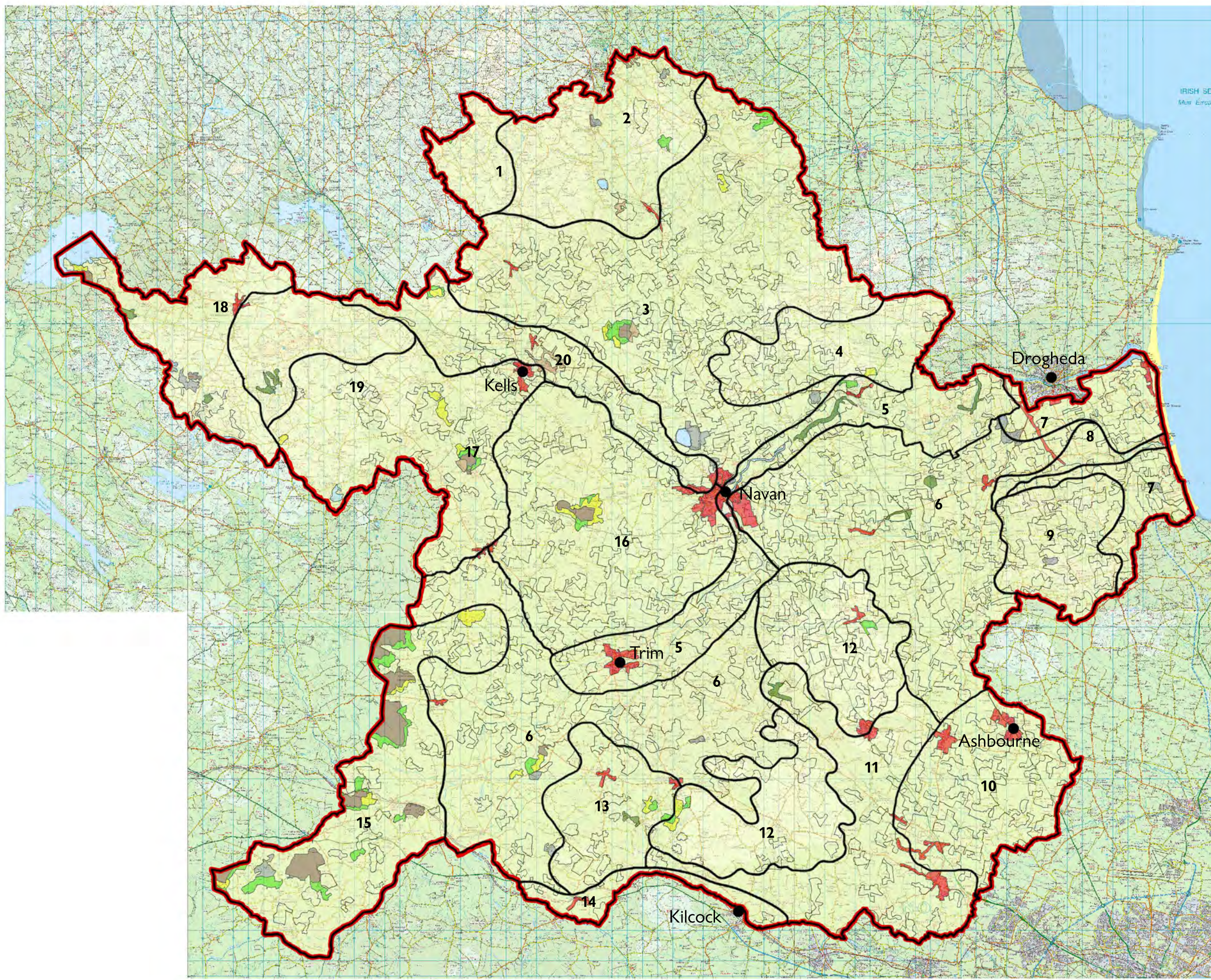
 Landscape Character Area Boundary



map 13: soils



map 14: hydrology



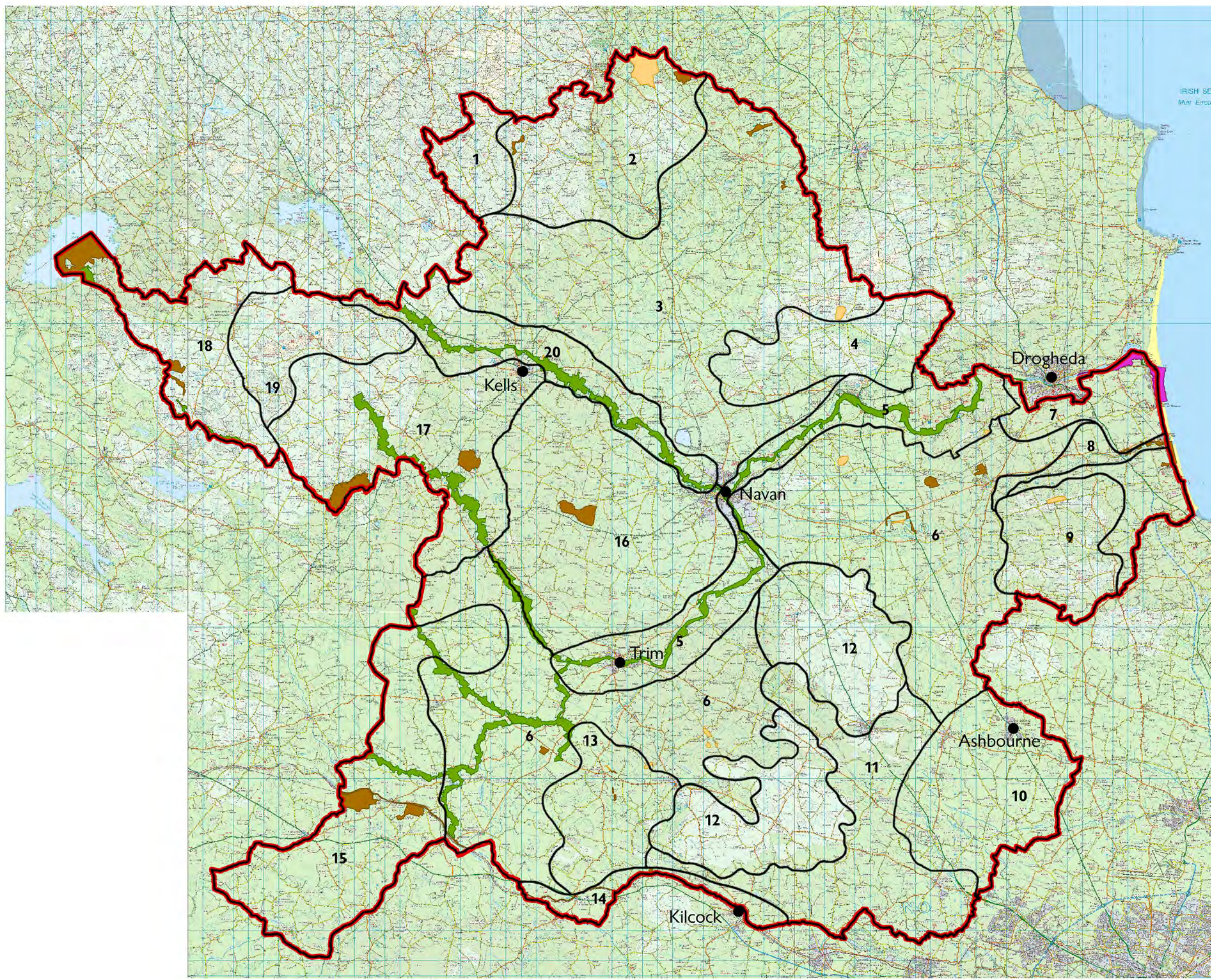
KEY

- Agricultural Land
- Broad Leaved Woodland
- Built Development
- Coniferous Forest
- Mineral Extraction and Landfill
- Mixed Woodland
- Natural Grassland
- Peat Bogs
- Traditional Woodland Scrub
- Transportation Network
- Water Bodies
- Landscape Character Area Boundary

N

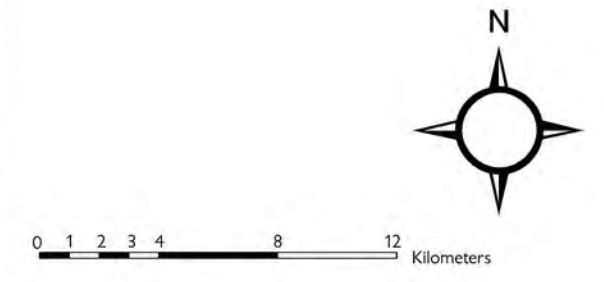
0 1 2 3 4 8 12 Kilometers

map 15: land use

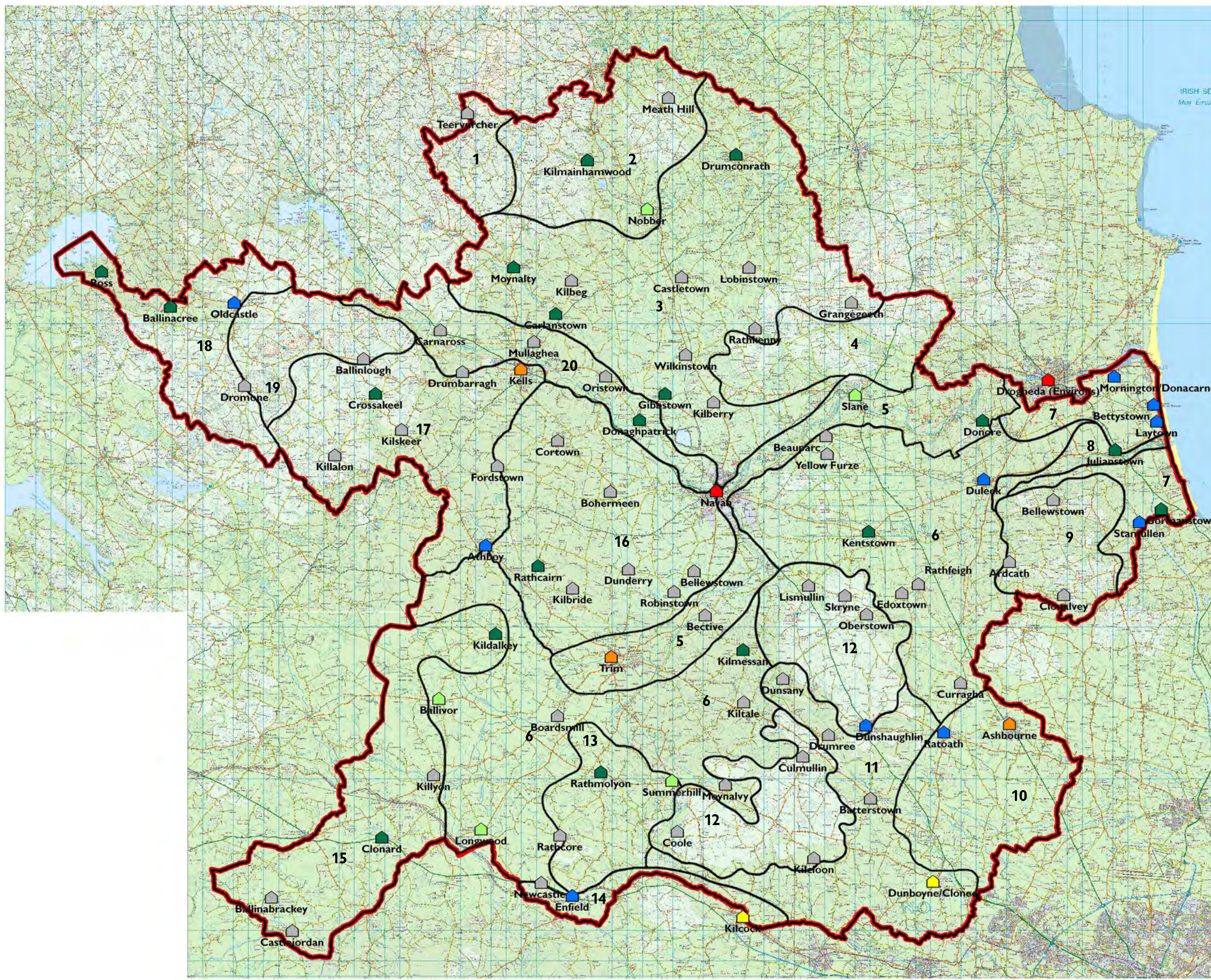


KEY

- Candidate Special Area of Conservation (SAC)
- Special Protection Area (SPA)
- Proposed Natural Heritage Area (pNHA)
- Important Habitats Formerly ASI
- Landscape Character Area Boundary



map 16: ecological sites

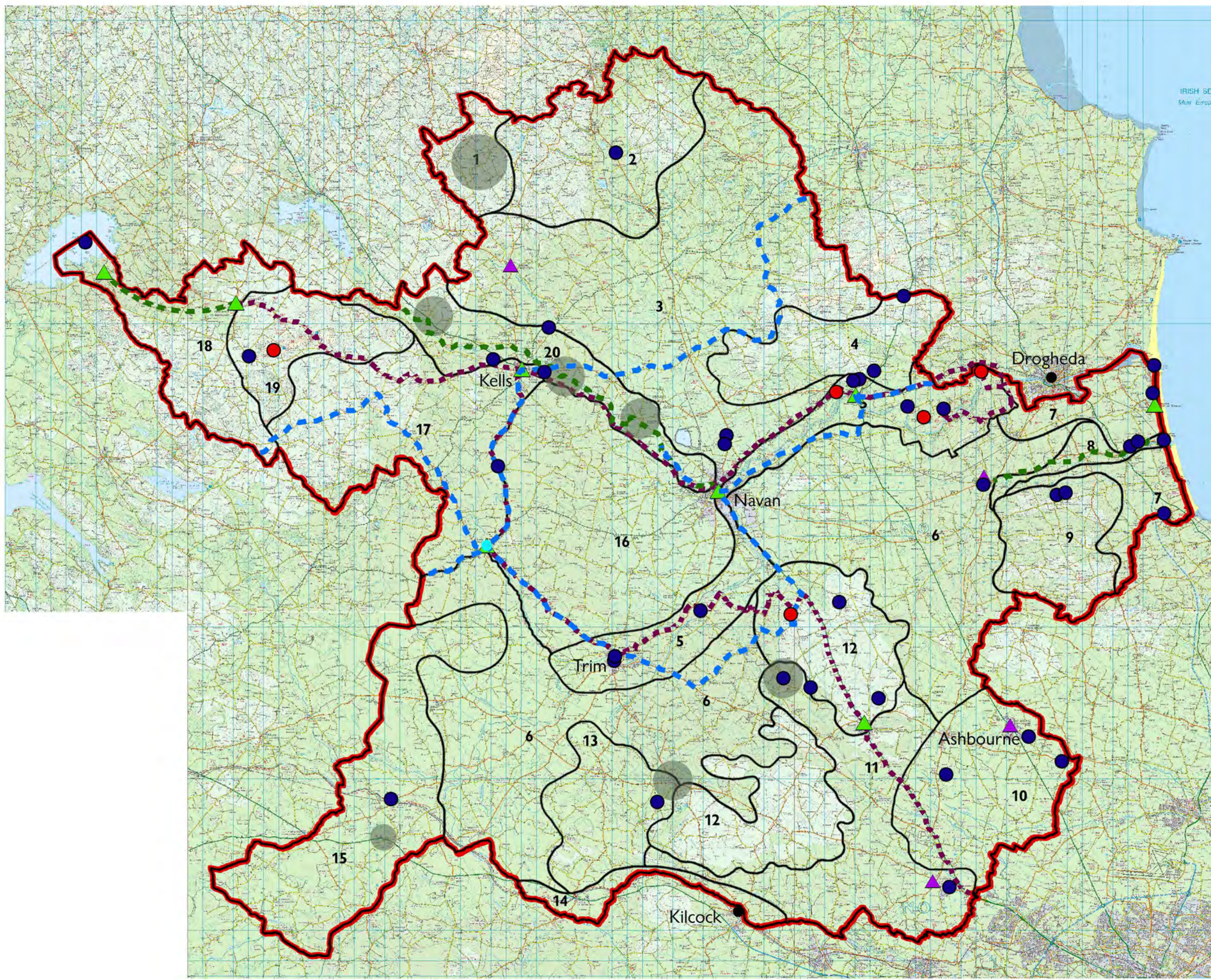



KEY

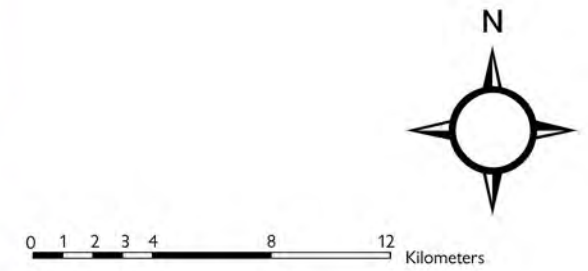
- Large Growth Towns
Up to 40,000
- Moderate Growth Towns in Hinterland
Over 5,000
- Moderate Growth Towns in Metropolitan Areas
- Small Growth Towns
1,500 - 5000
- Key Villages
1,000
- Villages
- Graigs
- 7 Landscape Character Area Boundary

0 1 2 3 4 8 12 Kilometers

map 17: settlements



- KEY**
-  Major Tourist Attraction
 -  Secondary Tourist Attraction
 -  Existing Waymarked Paths and Cycle Routes
 -  Indicative Routes for Potential Footpaths and Cycle Routes
 -  Settlements Providing Bases for Tourists
 -  Settlements with potential to be Tourist Bases
 -  Areas/Features with Potential to be developed as Tourist Attractions
 -  Existing Driving Routes
 -  Landscape Character Area Boundary



map 18: tourist attractions



meath landscape character assessment

produced by

Soltys:Brewster Consulting

May 2007





meath landscape character assessment

produced by

Soltys:Brewster Consulting

May 2007

